

**TAEA CONFERENCE
HIGHLIGHTS**



**"THIS CONFERENCE
GIVES ME THE
ENERGY I NEED TO
MAKE IT THROUGH
THE FALL SEMESTER."**



**"That Art Car
Parade was so
cool!"**

**YOU'RE A
PIECE OF WORK**

Highlighted quotes are from conference survey.

PRESIDENT'S MESSAGE

TAEA has grown since its humble beginnings. To think that art education in Texas had its roots planted solidly in fertile soil over one hundred years ago is mind boggling. The advances we've made together for art education is commendable. At this past year's conference in Galveston we celebrated those 100 years and all that we've accomplished in the years since, and all we hope to accomplish in the future. We had over 2300 in attendance. Thank you to all who participated, who worked, who planned and who organized to make this one of the most memorable conferences ever.

Let's bring in the new year with a vision toward growth, toward exciting new adventures in art education and toward impactful and meaningful lessons that nurture our young artists. I challenge each of you to connect with your artistic roots while at the same time rejuvenating your passion for all it means to be a valued member of TAEA.

Let 2020 be the year for exploration, for creativity, and generosity!

-JAMI BEVANS





REAL WORLD EXPERIENCE FOR AISD ART STUDENTS

Blank Spaces primary goal is to invest in the youth of our area by offering greater access to the Creative Arts. The local non-profit provides opportunities for young artists to install large-scale murals, curate and manage a local art gallery while leading efforts to contribute to civic beautification in Amarillo and surrounding communities.

Interns in the program work alongside professional artists to develop all aspects of mural painting including working with clients/property owners, idea generation, design conception, materials, application, budget and preservation. They are taught to collaborate with other artists, neighborhood residents, children from diverse schools and cultural backgrounds and giving back to our community to grow skills and work in “real world” artistic endeavors.

While large-scale murals are a “big” part of the initiative, interns also curate and operate the Blank Spaces Gallery. Every three months they rotate, install and host a gallery opening featuring student artwork from across the Texas Panhandle. Each month the gallery averages 800 visitors both locally and nationwide.

Through this program young artists are receiving the skills, leadership and training support necessary to pursue a wide range of creative-based employment and post-secondary educational opportunities. Blank Spaces promotes the vital and essential need for the Arts in the development and enrichment of a more analytical, well balanced and socially aware young person. By investing in area students, the organization is cultivating the ecology and importance of the Arts in the Texas Panhandle.



The Shops @ 34th Mural

3405 S Western, Amarillo, Texas
79109

This vibrant three-story mural celebrates the open skies, agriculture and clean wind energy of the High Plains. Local spotlights such as Bell Helicopter and the Amarillo Sodpoodles are present, and it nods to the majority of businesses in the shopping center that operate using recycled materials. The public artwork welcomes and thanks the yellow city in which it resides.

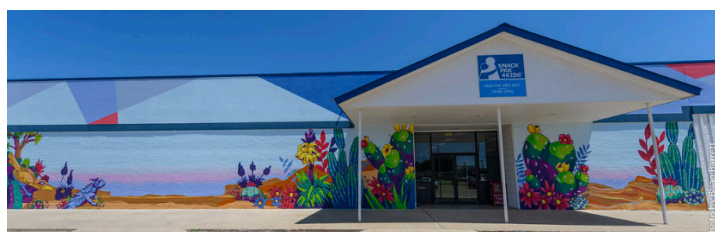


Shawn Kennedy, an art teacher at Caprock High School in Amarillo ISD, and executive director of Blank Spaces, said this idea came from striving to get his students out of the classroom and into the art world. Pictured above with his team of student interns.

The Hope Garden Mural

2406 SW 3rd, Amarillo, Texas 79106

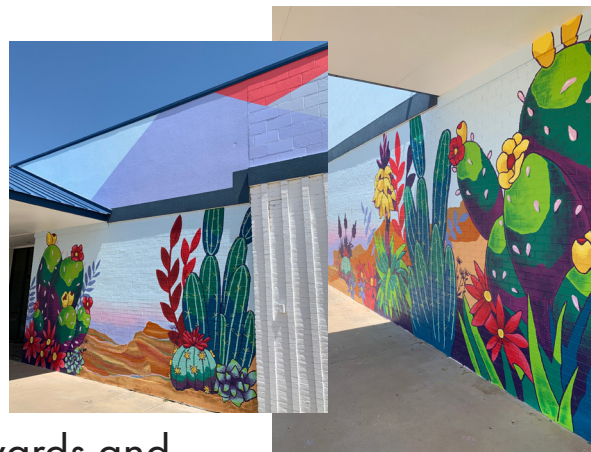
Offering artistic experiences that expand and serve the community is the basis of this mural. The concept depicts the biological lifecycle through the whimsical and imaginative means of a child and is an homage to the famous Cadillac Ranch. The public artwork is designed entirely by interns who facilitated the installation with 300 community volunteers including local businesses, civic leaders, law enforcement, non-profits, schools and daycare facilities. The Hope Garden consists of 60 raised garden beds and addresses the nutritional needs of patients and underserved families considered food insecure and in need of supplemental and sustainable nutrition.



Snack Pak 4 Kids Mural

2406 SW 3rd, Amarillo, Texas 79106

The SP4K's mural is the origin of the Blank Spaces Mural program and represents the idea that combining passion with purpose creates meaningful results for creative individuals. The mural depicts local flora and landscapes designed by the founding members of BSM, including present interns, project manager and executive director.



The Vineyards and Nuke City Veg Urban Garden Mural

1202 Cabernet Way, Amarillo, Texas 79124

The Vineyards, an eco-friendly neighborhood, and Nuke City Veg understand urban gardens create more sustainable communities that focus on the fundamentals of being human, just as Blank Spaces does. All three are growing a better experience by investing in each other and the planet. Neighborhood residents are given access to fresh organic produce in addition to those visiting the Amarillo Community Market and local restaurants Nuke City Veg supplies.

You can contact Blank Spaces on their Facebook Page.





YES, YOU CAN BE AN ADVOCATE FOR THE ARTS

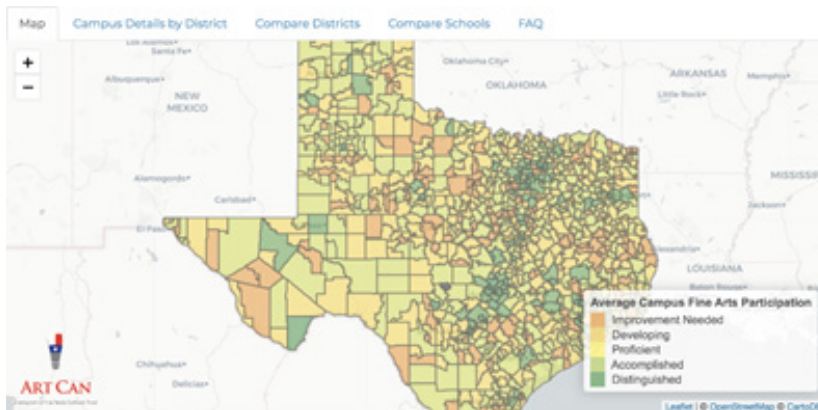
The [Texas Cultural Trust](#) is a 501(c)3 nonprofit organization whose mission is to be the leading voice for the arts in education, advocacy, and economic impact in Texas. The Trust's work is executed through six programs, one of which is [Art Can](#). The Art Can program conducts research and produces data to quantify the impact of the arts and creative sectors on the economy and education in Texas. In 2018, the Trust convened the [Arts Education Task Force \(AETF\)](#), comprised of more than 30 of the state's top academics, educators, advocates, philanthropists, and leaders from the fields of the arts and arts education. The AETF was charged with defining what constitutes a quality arts education and equitable arts access in

Texas public schools.

Phase I of the Task Force resulted in the creation of the Arts Education Access Rubric, an evaluation tool to be used by campus and district administrators to identify levels of arts access in education. The Rubric has been piloted in districts across the state and is now available for use by Texas parents, educators, and public policy makers to identify the levels of arts access. The indicators in the Rubric were used to illustrate a heatmap of Texas arts education access in the [Art Can Map](#). The findings illustrated in the Art Can Map reveal inequities in access to fine arts education that exist among school districts and campuses. The Art Can Map serves as a tool to evaluate and advocate for equitable arts access for Texas school children.

Evaluate arts access on your campus and in your district using the [Art Can Map](#).

Now in Phase II, the AETF has grown to [46](#) members and is uniting arts education communities across Texas in



creating a unified voice for arts education policy, advocacy, and best practices. The AETF will align messaging and develop a statewide strategic plan for advocacy in support of arts education and equitable access to the arts.

Additionally, the [Texas Cultural Trust](#) will establish the State of the Arts Council (SOTAC), bringing leaders from the community, state, business, and arts and culture industry together to identify the needs of the Texas arts community and

industry to advance priorities that will shape the cultural and economic future of the state. The Trust aims to increase awareness of policies that impact the arts across the state, and support arts organizations to independently mobilize their networks towards the shared goal of equitable arts and culture access for all Texans.

The Texas Cultural Trust will release the next [State of the Arts Report](#) in February 2021. You can advocate for the arts today by visiting the Art Can website to learn more about the impact the arts have on our state and to contact your district leadership and legislators in support of the arts in your community. We invite you to [join us](#) in our efforts to ensure equitable access to the arts for all Texans!

The AETF is a component of the Texas Cultural Trust's [Art Can](#) program. Other programs of the Trust include: [Texas Young Masters](#), [Texas Women for the Arts](#), [Partners in the Arts](#), [Arts Access](#) and [Texas Medal of Arts Awards](#).

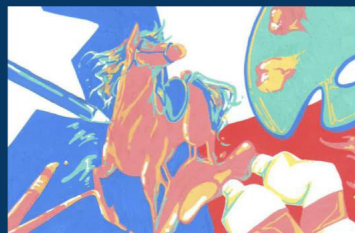
Jenny Parry,
Director of Programs, Texas Cultural Trust

THE 2020 YAM FLAG DESIGN WINNERS!



2020 Elementary School YAM Flag Design Winner

Natalie P. - 5th Grade
Honey Elementary School, Lubbock ISD
Art Teacher - Kathy Gist



2020 Middle School YAM Flag Design Winner

Eliza H. - 8th Grade
League City Intermediate School, Clear Creek ISD
Art Teacher - Sherry White



2020 High School YAM Flag Design Winner

Jeffrey W. - 9th Grade
Coppell High School 9th Grade Campus, Coppell ISD
Art Teacher - Elsa Reynolds

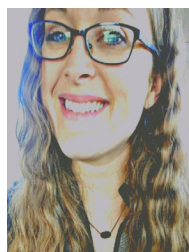
CONGRATULATIONS TAEA 2019 AWARD WINNERS!



SAMANTHA MELVIN
Texas Art Educator of the Year



KELLEY QUINN MCGEE
Outstanding Art Educator
Elementary Division



SARA KERSH
Outstanding Art Educator
Middle /Junior High
Division



JULIE SMITH
Outstanding Art Educator
Senior High Division



BETSY MURPHY
Outstanding Art Educator
Higher Ed Division



STACIA GOWER
Outstanding Art Educator
Supervision/
Administration Division



EMILY CLAYTON
Outstanding Art Educator
Museum Ed Division



DONNA ALDRICH
JANICE WIGGINS
Outstanding Art Educator
Retired Division



MATTHEW MARTINEZ
National Art Honor Society
Sponsor of the Year



KIMBERLY JENKINS
Principal of the Year



JANENE PEARSON
Lone Star Advocate

2020 Award Nominations Window is Open, Deadline for Nominations is March 6, 2020.
Click [here](#) for more information on nominating a person you would like to see recognized.

MODERN. LUXURY. BOHO.

Our Maltese, Lilly Belle, has always made sure the family was together, safe, and sound. So when we wanted to do something to help dogs, we knew the name right away, and Lilly Belle Jewelry Co. was born.

Now, Lilly Belle Jewelry Co. creates luxurious, handcrafted jewelry for you and then donates a portion of the profits to rescue shelters. You can look good in comfortable, modern designs and feel good knowing you've helped rescue a furry friend.

Lilly Belle. Handcrafted, luxurious style with purpose.

WWW.LILLYBELLEJEWELRYCO.COM

FACEBOOK/INSTAGRAM:
[@LILLYBELLEJEWELRYCO](https://www.facebook.com/LillyBelleJewelryCo)



LILLY BELLE
Jewelry Co.



SAVE THE DATE!



MINNEAPOLIS

March 26–28



TEACHING FOR ARTISTIC BEHAVIOR

The Art Education community has been ablaze for several years with such words as “choice based” or “student choice” curriculum, often accompanied by the acronym TAB- that is, Teaching for Artistic Behavior. In an attempt to de-mystify this movement as not just a trend, but as an enduring component of many teachers’ pedagogical practice, let us first identify what TAB is not. TAB is not about just letting students have “centers” all day every day- taking what can be used as a reward for good behavior and allowing access to it at all times. It is also not completely about letting students do just whatever, either. TAB has the potential to maintain the rigor of a classroom centered firmly on teaching students the elements of art and principles of design. It simply shifts the emphasis of the importance from the final product (the artwork) to the creative making process. TAB maintains that all students are artists, and the classroom is the studio. With this mindset, the responsibility for coming up with what the final product should be shifts from the teacher to the student. Because students are able to make all of the creative decisions, engagement and motivation to complete projects increases, making overall management better.

How is maintaining artistic rigor possible when we give our students this much choice? In The Open Art Room by Ian Sands and Melissa Purtee, a series of “boot-camps” and mini lessons are suggested in order for students to gain understanding and have extended practice with materials, where students will take the time to master them. Some students may need a variety of different levels and stages of teacher directed and student directed lessons- that is to say, everything that lies on the continuum from little choice to complete choice is good and appropriate for authentic learning at some point. TAB is exercise for students’ brains. They will have to learn gradually how to step into an artists’ shoes, at first being guided by elements which can assist in making creative decisions. These elements can look like guiding themes for units of artwork, or a specific selection of materials. As time and creative conditioning continue, the artists

are able to decide what they should make, how to make it, and why it is important that the artwork is made. This gives them the voice to create and respond to the world around them.

A vast amount of information about TAB and resources on how to get started are available at www.teachingforartisticbehavior.org.

-Christina Willis
First Year Art Educator
Cesar Chavez High School HISD



Gilded Pinch Pots

Lesson Plan for Grades K-12



Mona Lisa Composition Gold Leaf Kit (27001-4059)
Activa Plus Clay (33275-2051)
Blick Matte Acrylic (00727-2025)



Step 1: Create a pinch pot from air-dry or kiln-fire clay and allow to dry.



Step 2: Brush the inside of the pinch pot with adhesive, then place pieces of imitation gold leaf against the adhesive.

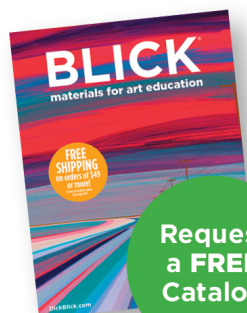


Step 3: If desired, paint the pot and protect finished pieces with sealer.

The most basic means of hand-forming pottery takes a dazzling new direction.

Be inspired by Jennifer McCurdy's nature-influenced, gilded porcelain pieces! Students get creative as they apply imitation gold leaf to small, air-dry clay vessels and create beautiful, useful homes for air plants, jewelry, coins, and more.

DickBlick.com/lesson-plans/gilded-pinch-pots



Request
a FREE
Catalog

DickBlick.com/requests/bigbook

CHECK OUT NEW lesson plans and video workshops at DickBlick.com/lesson-plans.
For students of all ages!

BLICK®

800•447•8192 DickBlick.com



TAEA's ALLEN, TX 2020 CONFERENCE CHAIRS



Myron Stennett



Linh Nguyen



Debbie Nicholas



Rhonda Goff

I
A
M
T
H
E
VISION
FOR FUTURE
CREATIVE LEADERS
ALLEN TEXAS 2020

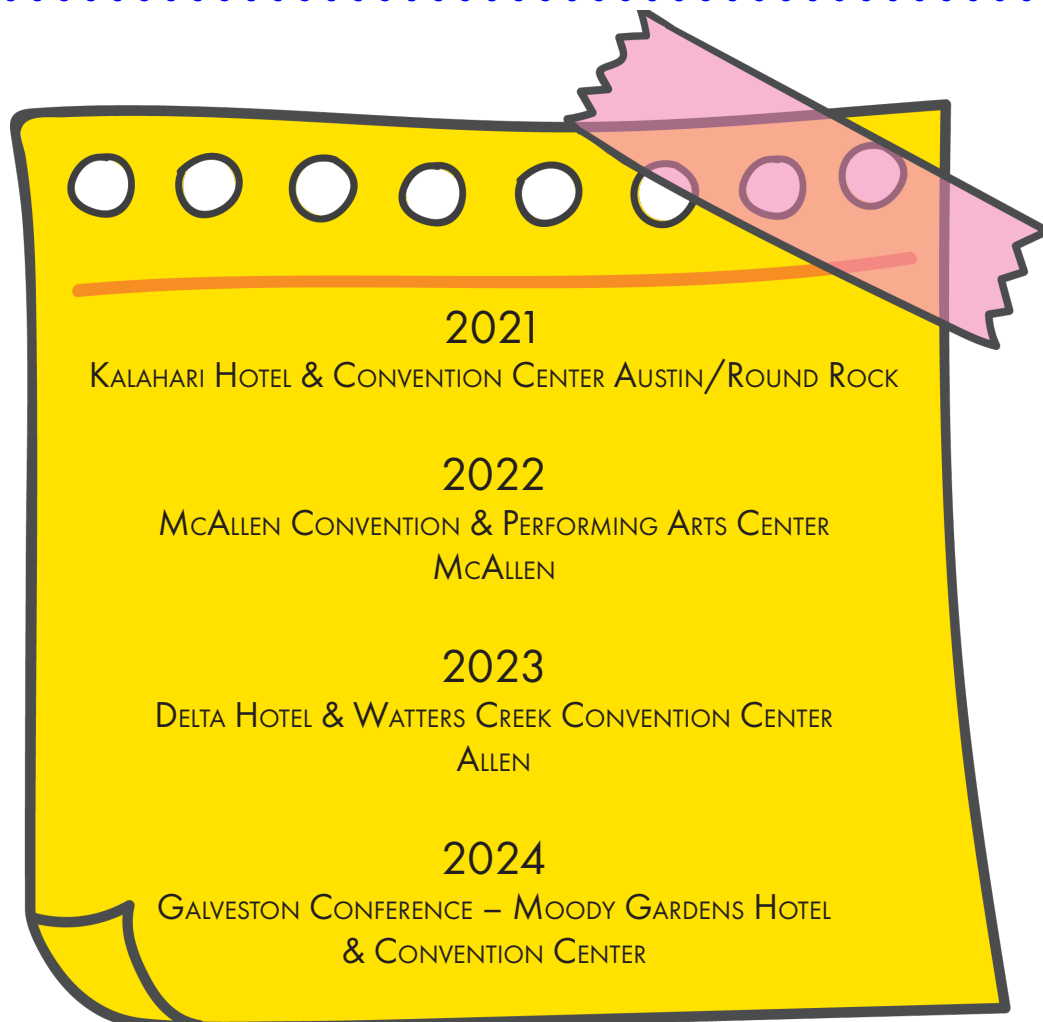
NOVEMBER 12-14, 2020

DELTA HOTELS DALLAS ALLEN & WATTERS CREEK CONVENTION CENTER

777 WATTERS CREEK BOULEVARD

ALLEN, TX 75013

PLANNING FOR THE FUTURE OF TAEA CONFERENCES



CONGRATULATIONS TO OUR NEW LEADERSHIP SCHOLARS!



Sakura Stephens
Austin ISD



Angela Coffey
Aldine ISD



Elizabeth Strobel
Amarillo ISD



Ambra Hernandez
Northside ISD



Want to learn more about our 2020 Scholars? How about how to become one? [Click here.](#)

ATTENTION MEMBERS!
WHEN WAS THE
LAST TIME YOU UPDATED
YOUR INFORMATION
IN THE TAEA
DIRECTORY?



Plan your event for
Friday, March 05, 2020.
Join our BIG audacious
goal of 1000 registered
Big Art Day events.

TAEA Headquarters
14070 Proton Road,
Suite 100
Dallas, TX, 75244
Phone: 972.233.9107
Fax: 972.490.4219
E-mail: info@taea.org

#TAEA2020

TAEA LEADERSHIP



Ricia Kerber (Commercial Exhibits Director), Maureen Doebbler (Secretary), Tiffany Silverthorne (Vice-President Elect Youth Art Month), Michaelann Kelley (President Elect), Mel Basham (Past President), Sara Chapman (Executive Director), Jami Bevans (President), Christine Grafe (Vice-President Youth Art Month), Pam Arnold (Vice-President Membership), Lisa Saenz-Saldivar (Treasurer), Gretchen Bell (Vice-President Elect Membership)



For up to date
information on all things
Texas Art Education
WWW.TAEA.ORG



I
A M
T H E

V I S I O N
F O R F U T U R E
C R E A T I V E L E A D E R S

A L L E N T E X A S 2 0 2 0

