

TAEA STAR

Fall 2016



Pre-Conference Issue



OUR VISION

The Texas Art Education Association (TAEA) promotes quality visual arts education.

OUR MISSION

TAEA's vision is achieved by:

- advocating visual arts education as an integral part of a balanced curriculum
- establishing quality art education through standards-based programs
- researching, developing, directing, and publishing best practices in visual arts education
- advancing knowledge and skills through professional development
- serving as a voice for art educators of Texas
- providing members with service and leadership opportunities
- endorsing the placement of highly qualified art educators
- mentoring the next generation of art educators

About the TAEA STAR

Purpose and Submission Guidelines

The Texas Art Education Association publishes the newsletter, TAEA Star, four times a year: Fall, Spring, Summer, Winter. Letters, articles, and comments are welcome. Please include your name, address, phone number, and email address on all correspondence for certification purposes.

The purpose of the STAR is to educate and communicate the association's activities to its Membership. The viewpoints contained in the Star represent those of the writers and not the Texas Art Education Association. The Star reserves the right to refuse any copy based on questions regarding copyright, ethics and/or inaccuracy. The editor reserves the right to edit copy for length without loss of integrity to submitted copy.

Texas Art Education Association STAR

Newsletter Schedule

Delivery Date	Materials Due Date to Editor
Pre-Conference Issue (September)	July 15th
Winter Issue (January)	November 15th
Spring Issue (April)	February 15th
Summer Issue (July)	May 15th

Please send photos, articles, and artwork to:
Sara Chapman
1106 Wildflower Ct.
Katy, Tx 77494
(281) 392-1099 - O
(281) 395-2339 - H

Advertising Rates

	Published Once	Published Twice	Published 3 Times
Full Page Ad (7" x 10")	\$200	\$350	\$450
Half Page Ad (3.5" x 10" or 7" x 5")	\$100	\$180	\$225
Quarter Page Ad (3.5" x 5")	\$75	\$130	\$150
Eighth Page Ad (3.5" x 2.5")	\$50	\$80	\$90

Ad must be prepaid to: TAEA. Mail or E-Mail (.jpg) black & white camera-ready ad and payment to:
Jody Henry, 14070 Proton Rd, Suite 100, Dallas, TX 75244
info@TAEA.org

Editor:
Sara Chapman, schapman04@comcast.net
Graphic Designer/Photographer:
Dani Pontus, dani@danipontus.com
Executive Assistant:
Jody Henry, info@taea.org
President:
Suzanne Greene, gooder71@gmail.com

TABLE OF CONTENTS

Conference Committee Welcome	4
President's Message.....	5
Conference Schedule	6
Hotel and Registration.....	9
Keynote Speakers	10
Conference Exhibitors.....	12
Big Art Day	13
Art & Soul.....	14
Silent Auction	15
Artisan's Market	16
Inside the Studio Series	17
TAEA Divisions	19
Advocacy	25
Experience Institutes and Tours.....	26
#K12ArtChallenge	27
Master Art Educator Series	30
Cassie Stephens K12 Art Chat.....	33
Area Art Show	34
Walk-Up Workshop Opportunities.....	35
Dale Battle Scholarship	36
Conference T-Shirt.....	37
Workshop Schedule.....	38
Conference Map	39
Membership Application	40
Conference Registration Form	42
Executive Committee.....	46

WELCOME

**PASSION
PURPOSE**

TO #TAEA16



Amanda Batson
Richardson ISD
K-6 Teacher



Laura Grundler
Plano ISD
Coordinator



Linh Nguyen
Arlington ISD
Coordinator



Myron Stennett
Richardson ISD
Coordinator

Picasso once said, "Every child is an artist. But the problem is how to remain an artist once we grow up." As educators, WE, have the power to reach out and touch the lives of many. WE, have the power to provide students the opportunity to be creative, expressive and passionate. WE, have the power to promote a nurturing environment of hope and success, where ultimately our emerging artists can express themselves on a blank canvas. We are ART EDUCATORS!

The 2016 Conference Committee would like to invite everyone to Dallas, TX for the annual TAEA Conference at the Anatole Hotel. We are very excited about the opportunity to serve you, and provide a myriad of workshops and events to drive your passion and purpose. Both keynote speakers will truly inspire and fuel our fire to be the BEST! So be ready to learn, create, and be passionate! Looking forward to seeing everyone in Big "D"!!!

Sincerely,

Amanda Batson, Laura Grundler, Linh Nguyen, Myron Stennett
Your Conference Chairs



Tweet us your questions for us to #TAEA16



CREATING FOR OURSELVES

We art teachers are unique in that we are teaching our students to think for themselves and create their own original art be it through painting, drawing, sculpting, photography, or many, many other forms of art. We unlock the creativity that is within our students and give them the time to just make art. We reteach them how to see and to use their art to express themselves. Many of us attended a Regional conference, the TAEA Leadership Institute, or other workshops over the summer which allowed us to become the artist and learn from the inspiration from others. There is a bond that develops when we are creating together. I have seen this many times in my own classroom among my students and I felt it again this summer while creating at our Leadership Institute and NAEA's Artistry of Leadership.

Last year TAEA started a Sketchbook Challenge to remind us that we need to take the time to create. One of these challenges was the ABC of Gratitude which I just completed using photography as my medium. I found that the letter X was the hardest letter to solve. What was your stumbling block? Take a look at our website and you will see ART challenges that are posted for every month. Have you done one?

Passion is Purpose. Why do you think the Dallas Team chose this theme? What is your passion and what is your purpose? My passion is art and TAEA. I want to serve each of you to the best of my ability. My purpose is to reach out to other teachers who need assistance and to promote Art Education in all schools in Texas.

Connect to your heart and respect, inspire, reach, and advocate for your passion and purpose.

Suzanne Greene President



Texas Art Education Association

Conference Schedule 2016

Anatole Hotel and Convention Center Dallas, Texas

WEDNESDAY, NOVEMBER 16, 2016

6:00pm-9:00pm	Local Committee Work	Desoto
7:00pm-10:30pm	Executive Board Meeting	Presidential Suite
7:00pm-12:00pm	Registration Set Up	Trinity Pre-Function

THURSDAY, NOVEMBER 17, 2016

7:00am-4:00pm	Commercial Exhibitors Move In	Trinity Exhibit Hall
7:00am-7:00pm	Local Student Exhibition	Hallway to Trinity Pre-Function
8:00am-4:00pm	Council-at-Large	Monet
9:30am-9:00pm	Registration	Trinity Pre-Function
12:00pm-1:00pm	CAL Lunch	Madrid
12:00pm-4:00pm	Tech Lab	Senator/Governor's
12:00pm-4:30pm	Walk-Up Workshops	Multiple Locations
12:00pm-6:00pm	Local Command Center	DeLa Salle
12:00pm-7:00pm	Silent Auction	Trinity Pre-Function
4:00pm-7:00pm	Commercial Exhibits Open	Trinity Exhibit Hall
4:00pm-7:00pm	Conference T-Shirt Sales	Trinity Pre-Function
4:00pm-7:00pm	Concessions Open	Outside of Peacock Terrace
		Trinity Pre-Function
4:00pm-7:00pm	VASE Gold Seal Exhibition	Trinity Exhibit Hall
4:00pm-7:00pm	Workshops	Breakout Rooms
5:30pm-9:00pm	Experience Institutes/Tours	Jade Entrance

FRIDAY, NOVEMBER 18, 2016

7:00am-7:00pm	Registration	Trinity Pre-Function
7:00am-7:00pm	Local Student Exhibition	Hallway to Trinity Pre-Function
8:00am-2:00pm	Conference T-Shirt Sales	Hallway to Trinity Pre-Function
8:00am-2:00pm	Concessions Open	Outside of Peacock Terrace
		Trinity Pre-Function
9:00am-2:00pm	Commercial Exhibits Open	Trinity Exhibit Hall
9:00am-2:00pm	VASE Gold Seal Exhibition	Trinity Exhibit Hall
9:00am-2:00pm	Workshops	Breakout Rooms
9:00am-2:00pm	Art-N-Soul	Peacock Terrace
9:00am-2:00pm	Master Art Educators	Monte Carlo
9:00am-2:00pm	Silent Auction	Trinity Pre-Function
9:00am-1:00pm	Experience Institutes/Tours	Jade Entrance
2:00pm-4:00pm	FIRST GENERAL SESSION:	Trinity Ballroom
	Awards Presentation	
	Janeil Engelstad	

FRIDAY, NOVEMBER 18, 2016 (cont'd)

4:00pm-5:00pm

4:00pm-7:00pm

4:00pm-9:00pm

5:00pm-7:00pm

5:00pm-7:00pm

5:00pm-7:00pm

5:00pm-7:00pm

5:00pm-7:00pm

5:00pm-8:00pm

5:00pm-7:00pm

7:00pm-8:30pm

Vendor's Showcase

Concessions Open

Experience Institutes/Tours

Inside the Studio Series

Janeil Engelstad

Commercial Exhibits Open

Art-N-Soul

Silent Auction

VASE Gold Seal Exhibition

Workshops

Master Art Educators

Artisan's Market

Trinity Exhibit Hall

Outside of Peacock Terrace

Trinity Pre-Function

Jade Entrance

Coronado A

Trinity Exhibit Hall

Peacock Terrace

Trinity Pre-Function

Trinity Exhibit Hall

Breakout Rooms

Monte Carlo

Trinity Ballroom

SATURDAY, NOVEMBER 19, 2016

8:00am-2:00pm

8:00am-9:00am

8:00am-1:00pm

9:00am-1:00pm

9:00am-2:00pm

9:00am-1:00pm

9:00am-2:00pm

9:00am-1:00pm

9:00am-2:00pm

9:00am-2:00pm

9:00am-2:00pm

10:30am-1:30pm

1:00pm

1:00pm-2:00pm

2:00pm-4:00pm

Registration

Division Meetings

Local Student Exhibit

Silent Auction

Commercial Exhibits Open

VASE Gold Seal Exhibition

Workshops

Master Art Educator Series

Art-N-Soul

Walk-Up Workshops

Conference T-Shirt Sales

Experience Institutes/Tours

Silent Auction Ends

Gold Seal Pick up

SECOND GENERAL SESSION: Trinity Ballroom

FELLOWS INDUCTION

DALE BATTLE Awards

Cassie Stephens

4:00pm-5:00pm

4:00pm-5:00pm

4:00pm-6:00pm

4:00pm-6:00pm

4:00pm-7:00pm

5:00pm-6:00pm

6:00pm-9:00pm

Pick up Local Show

Pick up Silent Auction Items

Inside the Studio Series

Cassie Stephens

Workshops

Concessions Open

YAM Meeting

Experience Institutes/Tours

Trinity Pre-Function

Breakout Rooms

Hallway to Trinity Pre-Function

Trinity Pre-Function

Trinity Exhibit Hall

Trinity Exhibit Hall

Breakout Rooms

Monte Carlo

Peacock Terrace

Multi Locations

Trinity Pre-Function

Jade Entrance

Trinity Pre-Function

Trinity Exhibition Hall

Hallway to Trinity Pre-Function

Trinity Pre-Function

Coronado A

Breakout Rooms

Outside of Peacock Room

Trinity Pre-Function

Metropolitan

Jade Entrance



Unlock Your Students' Potential with the best resources for your K–12 art classes!

Whether your school is emphasizing theme-based learning, STEM, big ideas, essential questions, connections to language arts and other interdisciplinary connections—all Davis programs are designed to provide you with the resources you need to support and supplement your curriculum.

In the Student Books, you and your students will find:

- Brilliant **fine art images** to demonstrate each concept. Art images are from across time and around the world
- **Engaging studio experiences** that include step-by-step support
- Accomplished examples of **student artwork**
- Art criticism of fine art and student artwork

Teacher Editions of our K–12 art programs provide a wealth of teaching support including:

- Interdisciplinary Connections to STEM subjects
- Differentiated instruction
- Lesson extensions
- Spanish support
- Inquiry-based learning
- Discussion suggestions
- Comprehensive assessment rubrics

Davis K–12 curriculums are available in **both print and digital formats** for students and teachers. Sign up for a **FREE 90-day test drive** of eBooks and the Image Subscription at **DavisArtSpace.com**.

Contact your local sales representative for presentations, sampling, and other information.

Texas Sales Manager: Scott Benson (508) 612-2650 SBenson@DavisArt.com
North Texas: Frank and LeAnne Jennings (972) 317-8742 FJennings@DavisArt.com
South Texas: Luann Tomkinson (210) 412-7233 LTomkinson@DavisArt.com
Southeast Texas: Ellen and Andrew Sankowski (281) 363-4906 ESankowski@DavisArt.com





Hilton Anatole Photo Courtesy of Tripadvisor

Book your hotel room at the Hilton Anatole Hotel for the 2016 TAEA Conference and receive the conference rate of only \$159 per night. Just click on this link ([TAEA Reservations](#)) to complete your reservation.

Conference registration opens September 6th. Conference fees for TAEA members are shown below. You must be a current member or guest to attend. You can join or renew at taea.org.

	Early Registration through 10/17	10/18 - 10/31	After 10/31
Active Member	\$130	\$145	\$170
Associate Member	\$130	\$145	\$170
Retired Member	\$124	\$139	\$139
Full-time College/Univ. Student (1)	\$0	\$0	\$0
Institutional Member	\$275	\$275	\$275
TAEA Fellow	\$70	\$70	\$70
<i>Saturday Sessions Only</i> NEW!	\$99	\$99	\$99

(1) Pre-service students must provide current college ID and must attend the Student Division Meeting at conference.

Register now at taea.org

#TAEA16 A CONVERSATION WITH CASSIE STEPHENS

Elementary Art Educator and Blogger
<http://cassiestephens.blogspot.com/>



About Cassie -

After spending entirely too long at Indiana University getting her degree in both painting and art education, Cassie Stephens did her student teaching in the magical land of Ireland. While she was away, her parents, fully aware of her slacker ways, sent out 52 art teacherin' job applications to such far away places as Alaska. One such place that called her for an interview was Nashville, Tennessee. On a whim, she loaded up her jean-jumpers, resume and chain-smoking grandma to make the trip to Nashville where she landed her first teaching gig.

Fast forward nearly 15 years and Cassie had settled down with her husband and their three cats. Sadly, she'd fallen into an art teacherin' slump rehashing stale art lessons, still wearing those sad jean jumpers and doing little creating of her own. It was then that she decided to create a blog that might help snap her out of her funk. Her idea was this: if she were to write thrice weekly about her ensembles, her lessons and her creations then she'd be forced to inject more creativity into her life.

Zip forward once more to the present. These days, you can find Cassie teaching in Franklin, Tennessee, just south of Nashville. Cassie has maintained her blog for the last four years. Since then, she's managed to find the secret to her personal art teacherin' happiness by connecting the passions in her life: teaching, creating and dressing like a crazy person. Such has helped her connect with a world of art teacherin' friends who are also passionate about this most amazing and incredible job.



Tweet your questions for Cassie to #TAEA16CS and it might be selected to ask her on stage.



#TAEA16 Presents:

Janeil Engelstad

Artist, Curator, Educator and Producer
www.janeilengelstad.net



About Janeil -

Janeil Engelstad initiates multiform, collaborative projects that address social, historical and environmental concerns. Valuing the potential of collaborations, her process for this work includes embedding herself in communities, deep listening, extensive research and building coalitions between arts institutions, schools, government agencies, NGOs and others. These projects often create a place for individuals and groups who do not have access to art making opportunities or a voice in society to express their identity, experiences and points of view.

Engelstad has led arts education organizations, large and small, in New York, Los Angeles and Chicago. Her success in these roles led to her work as a member of The College Board's National Arts and Education Task Force, which developed recommendations for the United States Congress as part of the national arts based learning initiative connected to STEM and other Pre-K – 12 programs.

Ms. Engelstad has taught and lectured at universities throughout North America and Europe and in 2006 she was a Fulbright Scholar at the Academy of Fine Arts and Design in Bratislava, Slovak Republic. She is a member of the Social Practice Art Research Center at the University of California, Santa Cruz and the Founding Director of Make Art with Purpose (MAP) an organization that produces international projects addressing social and environmental concerns that often include arts education as a core component of methodology and process.

To learn more visit: janeilengelstad.net
& <http://makeartwithpurpose.net/>





Dallas 2016 Exhibitors

Don't miss out on the many exciting exhibits at this year's conference! Choose exhibitors that cover all mediums and educational levels. Out Exhibitor Showcase (Friday, 4:00pm-5:00pm) is a great way to relax and visit with individual exhibitors without being pressed for time. This unique experience enables you to talk to exhibitors about techniques, ideas and available products.

Alan Franklin & Associates, LLC

Abbeville Press, Inc.

Activa Products

Amaco/Brent

American Ceramic & Glass Supply

Armadillo Clay & Supply

Asel Art Supply

Blick Art Materials

Brazos Glass

Canson INC

Asel Art Supply

Carpenter-Wild Associates

Ceramic Store of Houston

Chroma Acrylics, Inc

Circuit Scribe

Claire Lynn Designs

ColArts

College for Creative Studies

Crayola, LLC

Cress Mfg. Company

Davis Publications

Denton Art Girls

Dixon Ticonderoga

Duncan Ceramics

FIDM/Fashion Institute Of Design & Merchandising

Gel Press by Poly Gel

General Pencil Company

Global Crafting

Gold & Company

Imagination International Inc.

Jack Richeson & Company

Majeza Jewelry Cleaner

Mark Kistler Drawing Lessons

Mayco Colors

MD Enterprise Pro Panels

Memphis College of Art

Nasco

Nature's Wonders; The Bell Keepers

Olympic Kilns

Pacon Corporation

Paragon Industries

Piel Canela Peru

QRosity

Royal & Langnickel Brush

Sargent Art

Sax Art & Crafts/ School Specialty

Shimpo Ceramics

Skutt Ceramic Products, Inc.

Southwest School of Art

Spa Escape – BeautiControl

Spectrum Glazes

Square 1

State Federation Porcelain Art Clubs of Texas

Stephen F. Austin

TAEA Headquarters

Take Care of Texas - TCEQ

Texas A&M Commerce

Texas Cultural Trust

Texas Pottery Supply & Clay

Waterman Marketing

YAM



In the 21st century, everything around us is **VISUAL**. From the clothes we wear, to the app we use on the *smartphone* we bought because of its function, but most important, its design. User interfaces for daily tasks are moving from the written to the visual. The way something looks has now become as important as its functionality. Our children consume knowledge from a multitude of sources mostly through screens – game screens, *ipod* screens, computer screens, flat panel television screens, data projection screens, and many more. Gone are the days of producing imagery on the fly without a graphic designer or someone with some visual art knowledge. Consumers demand websites that are slick, clean and sophisticated to drive people to their content and achieve their business goals. You have to **Be Visual** in the world today.

Did you know that . . .

We live in a visual age. Most children and youth spend 10 hours per day in front of screens composed of pictures and words, often two types of screens at once.

The arts provide jobs. 1.25 million Americans currently work in the visual arts. Jobs for artists and designers are predicted to increase by 43% by 2016.

Art education equips students to form mental images, which can be used to solve problems—an ability that chemists, engineers, and architects use to create models and that inventors use to think up new ideas.

Art education requires students to use their eyes and hands to give form to ideas generated in the brain—a discipline that Nobel Prize winner Eric Kandel proved boosts brain power. Research also indicates that high school art programs engage students and keep in school those at-risk of dropping out.

Added content from: http://www.arteducators.org/advocacy/ARTS_ED_e-FLYER_3.pdf

Now more than ever, the children of Texas need to be strong, educated, visual learners to achieve success and access knowledge in the 21st century. The Texas Art Education Association promotes quality visual arts education by advocating it as an integral part of a balanced curriculum in Texas schools. We encourage children, youth, and adults to **BE VISUAL** and learn about art. Watch for the TAEA **Be Visual** initiative throughout annual conference and through the year. Get connected for Big Art Day in Spring 2016 – even bigger and better in year three! Support art education in your Texas community!



We invite you to participate in our annual Art-N-Soul program by engaging in our maker-space event held in the Peacock room. TAEA members will have the opportunity to create clay bowls and fleece blankets in an effort to give back to the community.



Bowls will be donated to a local school or district in support of the Empty Bowls Project and the fleece blankets will be donated to a local children's hospital. So come on out, be passionate and let's truly leave your "mark" in Dallas!

ART & SOUL

CREATE. GIVE. BE THE CHANGE.

NOVEMBER 18-19
10 AM TO 2 PM

ROOM: PEACOCK
#TAEA16



SHARE YOUR ARTISTIC PASSION

*Take time this summer to create
BIG or small- 2D or 3D - create from
your heart then make a difference by
donating it.*

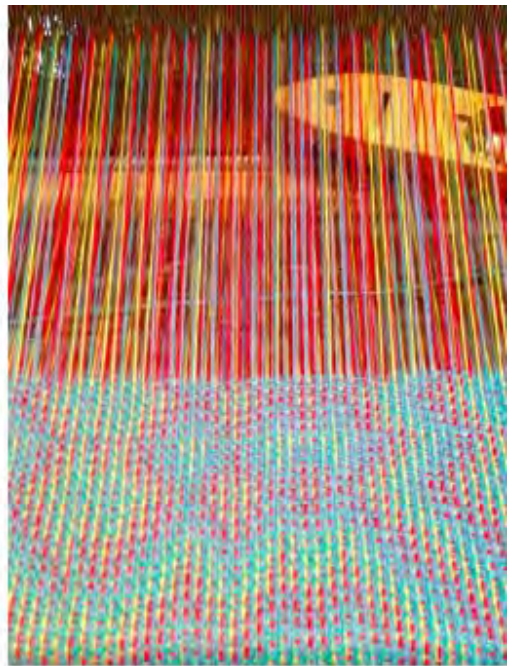
TAEA Silent AUCTION

NOV 17-19

More Information to COME



**HILTON ANATOLE
DALLAS, TX**





ARTISANS MUST COMPLETE THE A.M. APPLICATION & RETURN IT TO
ELIZABETH WILLETT AT EHWILLETT@YAHOO.COM BY OCTOBER 27TH FOR CONSIDERATION.

We are looking for members who:

- * Create their own artistic items to sell,
- * Represent artisans who sell their works, or
- * Sponsor a student art organization wanting to raise funds
(Only adults may sell items)
- * Proceeds may go to Art Clubs, National Art Honor Society or National Junior Art Honor Society.

Criteria

- * Items must be artistic or craft-like in nature (handmade, unique, original, and innovative.)
- * All artisans are responsible for their own tax collection, change, packaging, etc.
- * All artisans must be current TAEA members.
- * Artisans are responsible for their own set up and tear down.
- * Artisans must staff their own tables.
- * Artisans must provide one donation item with proceeds going to the Memorial Scholarship Fund.

ARTISANS FRIDAY 11/18/16

7 TO 8:30 PM **MARKET**

TRINITY BALLROOM

**PASSION
PURPOSE**



INSIDE THE STUDIO WITH *Cassie Stephens*

Needle Felting

Join Cassie Stephens as she introduces you to the wonderful world of needle felting! This fun craft, which is much like painting with fibers, is a marvelous medium that you and your students will enjoy exploring. Feel free to bring an article of clothing to embellish or felt on the fabric provided. You'll be amazed at just how easy it is to create your masterpiece!

*4 pm Saturday, November 19th
in CORONADO A*



**HILTON ANATOLE
DALLAS, TX**



INSIDE THE STUDIO WITH

Janeil Englastad

MAP

MAKING ART WITH PURPOSE

Friday November 18th
@ 5pm-7pm

CORONADO A



Participants will work on design and production of miniature maps using paper, paints, and local re-cycled materials. The participants will be encouraged to look deeply at the their place of residence and to create maps that not only communicate geographical landmarks, roads, and buildings, but also their understanding of the ecology, values, and points of view about the place. The objective is to provide the participants with an opportunity to examine and express information that is thought provoking and widens their perceptions about their environment.



TAEA DIVISIONS

Are you suffering from I-EATS?



Elementary Division
Jean Deirdre King

I-EATS is a newly (as in the last five minutes) created acronym for that horrible condition "Isolated Elementary Art Teacher Syndrome". I know, I suffered from it in silence for years.

Well, suffer no more! Relief is as close as the screen of your internet connected device. There are multiple treatments available.

First, there is the TAEA annual conference where you'll be able to meet your peers and colleagues face to face. Make sure to come to the Elementary Division Meeting in addition to all the rest. We'll keep you up to date on what's happening in art education, but most particularly what's going on in elementary art.

Second, there is the always available TAEA website where you can find information day or night. There are "Best Practices and Lesson Plans", job listings

and ways to promote your art program and so much more.

Next, if you are on FaceBook, check out the TAEA Elementary Division group. This is a closed group. You'll have to ask to join, but it won't be a problem. While you're on FaceBook you may also want to check out some of the other TAEA pages like the TAEA Texas Art Education Association, TAEA Middle School/Junior High Division and the TAEA High School Division page. You'll be amazed at how much information you can find and the professional learning network (PLN) that you can build.

Finally, there are all the great elementary arts educators to follow on Twitter. You can find me @jean999 and many more. Especially check in on Thursday evenings at 8:30 pm CST for #k12artchat.

I hope to see you around. No more isolation!

"We Teach the Future"



Middle School Division
Christine Grafe

Welcome back, friends, to a new and exciting school year full of creative ideas and projects! Hopefully you've had the chance to relax and rejuvenate this summer, AND hopefully make some art as well!

Joelle and I have been hard at work this summer planning some fun activities for our Middle School/Junior High meeting at conference in November! This year's theme is, "We Teach the Future!" and we will concentrate on exciting ways to use technology in our classrooms to promote creative problem solving. If you're like me, you're always a little behind the curve on the latest and greatest technology advancements! Or maybe you're one of those people who are always aware of the newest technology trends! Whichever category you fall into, we want to see you at the meeting!!! We will be presenting several ideas and options, AND we'd love to see or

hear about the ways you use technology in your art programs. Would you be willing to share your ideas with the group and be part of the forum? Please let us know ASAP so we can add you to the program (email me at: cgrafe@csisd.org)! We're also planning to have lots of goodies to give away (as usual!), and T-SHIRTS!!!! I must admit that our former leader, Lisa Miller, created a monster with her t-shirt idea, but haven't they been fun?

Thank you so much for all the great things you do in your classroom every day! We know that the "middle children" we teach come with their own unique challenges, but can't they be simply amazing sometimes too? If there is ever ANYTHING I can do to help you, hold you up, or encourage you, please don't hesitate to let me know!

Christine Grafe cgrafe@csisd.org

TAEA DIVISIONS



High School Division
Michelle Mosher

Teaching Students to Think with the Artist's Eye

Where do artists get their ideas? What methods can be taught to foster the inspiration of leading students to the next level of creating? Often there is a leap in our teaching between showing students the process of making and then the students using that information to create their own original works of art. Or, if they manage that leap, they have no idea how they got there and cannot articulate their findings.

Michael Warren from the Dallas area will be our guest presenter at the High School Division meeting. He has put together a product called "Terra Forma Cards" to help make a bridge across the creative divide. He calls the cards "...an interactive springboard activity to help artists form unique

connections between content and concept in their work". Juxtaposition of images has long been a favorite tool for artists to get ideas, however Michael has packaged these with leading questions, vocabulary, and sentence stems to help teachers in the academic setting.

Please join us for the High School Division Meeting to learn, get breaking news, win some prizes, reconnect with colleagues, and even have a little fun!

Michelle Mosher artteacher008@yahoo.com
Sarah Waggoner sarah.waggoner@gpisd.org



Higher Education Division
Sherry Snowden

Higher Education News and updates

The TAEA Higher Education Division has had a stellar year of involvement and collaboration throughout the state on several levels. We have had wonderful participation from our Higher Ed members this year. Higher Ed member have participated at the TAEA Conference in Galveston, presenting numerous sessions and sharing research initiatives to forward art education in the state. In March, several universities including Texas State University and the University of Texas at Austin celebrated Big Art Day with big events led by students cultivating community involvement. Over the summer Higher Ed. members collaborated at our bi-annual summer summit held in San Marcos sharing goals for the next year for the Higher Ed Division. Two main goals came to the forefront from discussions regarding the

Higher Ed division's endeavors.

- Leadership in Higher Education,
- and bridging the gaps between theory and practice as we visualize the future of higher education for Texas Art Education.

As we move toward a new year in the Higher Education we look toward providing leadership and support to all the divisions as we work together to make Art Education even better in Texas.

Sherry Snowden
Snowdens20@hotmail.com

TAEA DIVISIONS



Museum Division
Jennifer Restauri

Onsite, Online, or Offsite Programs: What's the Impact?

Museum Educators across Texas and the country are answering the call to provide evidence of the impact of their programs. Through research, data collection, and reporting, we are illustrating the value and scale of impacts that are possible with onsite, online, and offsite programs.

But what is the metric of success, and how is it set? How are the metrics different for onsite, offsite, and online programs? Should the metrics be different? Should different areas (rural, suburban, urban) have different metrics? What are the best ways to communicate our evidence-based findings to our administrators and boards? To our communities?

I invite you to join this conversation with the Museum Division on Thursday, November 17, 2016 from 5:30 – 8:15 p.m. at the Crow Collection of Asian Art. During this annual pre-conference discussion, we will grapple

with these questions and begin a division effort to define metrics of success that can be used at our institutions across the state.

I also encourage you to attend the numerous Museum Division sessions throughout the conference, and to keep in touch with the division through our Facebook group: TAEA Museum Division.

Lastly, please join me in welcoming **Emily Cayton**, *Associate Educator for Teachers and Docents*, as our *Division Chair-Elect*.

We look forward to seeing you in Dallas!

Jennifer Restauri, *Division Chair*
jrestauri@starkmuseum.org

Emily Cayton, *Division Chair-Elect*
ecayton@thecontemporaryaustin.org



Student Division
Shelby Johnson

Creative Community

This year's conference in Dallas (Nov. 17-19) will be ripe with amazing opportunities. There will be many awesome presentations and workshops to attend as well as vendors to see. As students, this is an invaluable opportunity to network with art educators from across the state. This year's conference could only use more of one thing...the Student Division!

This is only the second year that students have been able to attend the TAEA Conference without having to pay the registration fee. We are so grateful for this investment in our future and the future of art education in Texas. We must take advantage of this wonderful opportunity. Not only will there be many professional development and networking opportunities, but this is a time to meet and make great friends in a warm environment of your peers. You can gain insights in whichever art field

your future holds by speaking with those who have personal experience in them.

Save the date and come support your fellow students as they present throughout the conference. We will have a Student Division Meeting at 8:00AM Sat. 11/19/2016. Please attend and contribute your own insights and opinions. We will have some art-making activities and a time to engage with fellow students from across the state.

I cannot communicate how awesome and beneficial it is to share a few days with those who share your interests and ideals. For those who have been, I can't wait to see you again. If you've never been, you are missing out on a great opportunity. We hope to see you there!

Shelby Johnson s.c.johnson@tcu.edu

TAEA DIVISIONS

Passion with Purposeful Change



Supervision/Administration
Division

Dr. Sharon Chumley

How do we keep our *Passion* in the midst of all the federal, state and local changes in our disciplines and in our courses? It's an exciting challenge; so, for some potential options, start making *Big D* plans to attend the 2016 TAEA Annual Conference at the Hilton Anatole Hotel, 2201 N. Stemmons Freeway, Dallas, TX 75207. The supervisor's/administrator's meeting is scheduled for Thursday, November 17, 2016, from 4:00 pm–9:00 pm.

Plans are being made to include expert speakers, interactive activities, group problem solving, use of smart phone feedback, and some unique presentations. Some of the topics may include:

- Middle School Art for HS Credit (HS Art I for 8th graders)
- State changes that allow students, regardless of grade level, to enroll in courses that have previously been reserved for 8th grade and junior and senior high school

- Various plans for students placed in an alternative campus for disciplinary reasons
- Alignment exhibits with all levels of feeder schools – high schools with feeder middle schools and feeder elementary schools
- Visual arts assessment – especially formative assessments.

Excitement is rising regarding the expertise of supervisors and administrators all gathered for one event. Come ready to amaze your peers and be amazed by your peers. Lead teachers are encouraged to bring expertise and also attend this meeting. Everyone is highly encouraged to attend the entire conference; however, if not possible, you may pay for attending the meeting and your membership only.

If you have agenda topics on **Change**, e-mail suggestions to charlsey.chumley@nisd.net. Hope to see you in Dallas.



Private School Division
Elizabeth Zepeda

Private School Division

Time to Get Growing!

Greetings TAEA Members!

I am Elizabeth Zepeda, your TAEA Division Chair. This is my first year in this position and I am eager to meet you at this year's conference in Dallas.

As some of you may know the Private School Division is a small group of teachers from a variety of independent schools and homeschool art programs spread out across the state. My goal as Division Chair is to help us grow within the organization and support the unique needs we have as Private and Independent school art teachers.

Goals that I look forward to building with our members are...

Becoming Connected: Create an online presence that allows everyone the opportunity to share ideas,

lessons and post questions for feedback.

Growing our Division: When we strengthen our ties with each other we can then reach out to other art teachers in our region and invite them to join us; as we pursue expanding our knowledge and love of the arts.

Building Participation: Host a private school division mini-workshops. Get involved with VASE/JrVASE -work towards bridging the student participation gap.

We will have a Meet and Greet during the conference so make sure to look for it in the upcoming catalog. See you soon!

TAEA DIVISIONS

Community Division



Community Division
Maggie Leysath

The Community Division for TAEA is committed to serving those who bring art into their communities. However you do that, whether it is through non-profit centers, retail centers, or from the classroom, we want to know about what you are doing, how you are making community connections and what your priorities are.

Of primary interest are the diverse ways in which art educators provide art education and serve their communities and how TAEA can serve you through the community division.

Please do not hesitate to contact me with the areas of interest and concerns you have for community art education. Below find some possible areas of interest for the Community Division. Please feel free to contact me with your ideas so we can add to the list. Together we can make a difference.

Possible areas of interest are:

1. Research
2. Community Connections such as:
 - Schools and seniors
 - Public space beautification
 - After school programming
 - Initiating community connections
 - Rural community connections and support
3. Grants
4. Support Services
5. Professional Development

maggieleysath@gmail.com

936-933-1096



Retired Art Educators
Donna Andrich and Janice Wiggins

To Retired Teachers or “Thinking About Retiring Soon” Teachers: "Still Creative after all these Years"

We would like to invite you to meet with happily retired art educators, Donna Andrich and Janice Wiggins, for a short overview about the role the retired members of TAEA play, or should play, in our professional organization.

Those of us who attended last years' presentation by Ron Venable were impressed by his art work, and also interested in how he has managed to get his art work exhibited in a variety of galleries and locations. This year, we are really pleased to announce that Walter Holland, retired teacher and TAEA Fellow, has agreed to share his expertise and experiences with us. We will also be discussing new ideas,

proposed by our TAEA President, on how we can impact our organization and those, "Bless their hearts- they are still working in the classroom" art teachers who might want or need our input and help.

If you have suggestions or ideas for the Brain-storming session or questions that we can address for you, please email Donna at donna.andrich@sbcglobal.net or Janice at lovecurl@sbcglobal.net. We look forward to seeing you at the TAEA Conference in Dallas at the Anatole Hotel, on Saturday, November 19th, from 11:00 am -11:45 am. As always, please check your TAEA Conference Schedule for the correct and last minute changesConference Schedule for the correct location and last minute changes

TAEA DIVISIONS



Membership
Samantha Melvin

Inspired Creating & Connecting

Every fall, we come together as art educators, advocates, peers and friends, learning, growing and creating with each other! Invite new art teachers to join TAEA, encourage them to attend conference, introduce yourself to student art teachers in your communities and schools. We are better when we #makeittogether! The Traveling Sketchbooks continue their trek across the state. We are adding more sketchbooks to connect within regions too! Follow the challenge on our new TAEA Instagram account
<https://www.instagram.com/txarted/>.

If you share on Twitter or on Facebook, be sure to tag your art with #taeasketchbook. ****A new membership initiative**** TAEA Wellness kicks off at conference with yoga and meditation sessions on Friday and Saturday & a walking map on the app! Be well, be centered, be creative! Chris Cooper and I look forward to connecting with you!

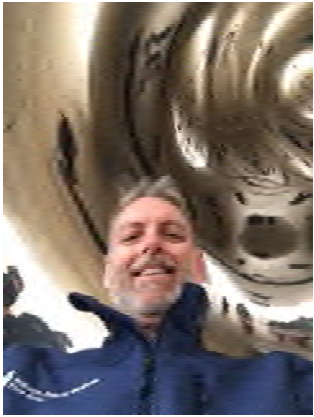
Samantha Melvin arteaches@hotmail.com

WWW.AMERICANCERAMICS.COM
WWW.AMERICANGLASSSUPPLY.COM
WWW.POTTERYCONSULTANT.COM

	<p>KILNS</p> 	<p>SWOOSH</p> 
<p>GLAZES</p> 	<p>GLASS FUSING</p> 	<p>WHEELS</p> 
<p>BAM!</p>  <p>BISQUE</p>	<p>SHAZAM!</p> <p>TEACHER</p> <p>IN-SERVICE</p>	<p>EQUIPMENT</p>  <p>TOLL FREE</p> <p>1-866-535-2651</p>

Advocacy

Tim Lowke, TAEA Advocacy Chair



Advocacy is public support for a particular cause. In visual arts education it seems as we are always working on this concept of advocacy. *Why is that?* The reason I see is that as educators we are working to advance our mission, our programs, and our outreach for greater student understanding, learning and passion for our discipline. In order to support rich programming, our communities and stakeholders have to support what we do daily. Every art educator, regardless if this is your first year or fortieth year in our profession should work to advocate for visual arts – subscribe to the mantra of “leaving it better than you found it.” As you advocate keep in mind the three “basics” of advocacy shared by NAEA and TAEA:

1. **Communicate a CLEAR message.** Show “*why is what you do in visual arts important?*” and be sure to include data whenever possible.

2. **Be VISIBLE.** Make a plan for your advocacy efforts and get outside your room/school walls with your **message**. Think about events you can showcase what happens in your space to the broader community.

3. **Activate an Advocacy NETWORK.** Identify committed people and help them get involved. Make sure the **message** is communicated clearly and all stakeholders are part of the greater vision and purpose.

Want to know more and be better informed? Be sure to attend Art Education Advocacy for the 21st Century during the TAEA Annual Conference. We will work to answer “Is your art program struggling? Is everything great, but you want to move to the next level?” Come find out how advocacy can win program friends in influence people! Tips, tricks, successes and open discussion shared. Leave with a TAEA Advocacy toolkit! Come learn to be an art advocate and Be Visual!

**RAFFLE GIVEAWAY
MAY 2017**

**ALL-EXPENSE-PAID
TRIP TO DETROIT**

If you are a high school art teacher, stop by our booth in the Vendor Hall to enter our Fly-In Raffle for your chance to win an all-expense-paid two-day trip to the College for Creative Studies.

COLLEGE for Creative STUDIES

CREATIVITY THRIVES IN DETROIT

CCS enrolls more than 1,400 students from 35 states and 37 countries, pursuing Master of Fine Arts degrees in Color and Materials Design, Integrated Design, Interaction Design and Transportation Design and Bachelor of Fine Arts degrees in Advertising: Copywriting, Advertising: Design, Art Education, Communication Design, Crafts, Entertainment Arts, Fashion Accessories Design, Fine Arts, Illustration, Interior Design, Photography, Product Design and Transportation Design.

VISIT WWW.COLLEGEFORCREATIVESTUDIES.EDU FOR MORE INFORMATION.

2016 TAEA Conference Tours and Experience Institutes

THURSDAY, NOVEMBER 17

- **Evening in the Arts District**

Thursday, 5:30 PM - 9:30 PM. Maximum of 100 participants. Fee: \$15

Ticketed Event

Enjoy Thursday evening in the Arts District! Explore the Dallas Museum of Art and Crow Collection of Asian Art at your leisure. The \$15 fee covers shuttle bus transportation. The last shuttle bus will leave the Arts District at 9:00 pm.

FRIDAY, NOVEMBER 18

- **Nasher Sculpture Center: Guided Tour of Kathryn Andrews: Run for President Exhibit**

Friday, 9:00 AM - 11:30 AM. Maximum of 15 participants. Fee: \$20

Ticketed Event

Join us for a guided tour of Kathryn Andrews: Run for President exhibit and create your own campaign button! Bus transportation included.

- **The Crow Collection of Asian Art**

Friday, 9:00 AM – 11:30 AM. Maximum of 30 participants. Fee: \$20

Ticketed Event

Join contemporary artist Abhidnya Ghuge at the Crow Collection of Asian Art for a discussion of the site responsive exhibition, Flight of the Canyon. Following the gallery conversation, join Education staff for an art making activity inspired by the artist's use of printmaking on a disposable medium which is then transformed into a sculptural work of art that could be included in a larger site responsive sculpture installation.

- **Dallas Museum of Art - STEAM AHEAD!**

Friday, 9:30 AM – 12:00 PM. Maximum of 28 participants. Fee: \$20

Ticketed Event

10:00 – 10:40am: Lindsay O'Connor, Manager of Docent and Teacher Programs, and Jessica Thompson, Manager of Teen Programs will give an overview of how we've incorporated STEAM curriculum into our programs with students, teachers, and our teen programs.

10:40am – noon: our STEAM docents will lead the participants in a STEAM-themed tour and hands-on activities in the galleries.

- **SPARK! Dallas: Adventures in Creativity**

Friday, 9:30 AM - 12:00 PM. Maximum of 27 participants. Fee: \$20

Ticketed Event

Join us for a tour and hands-on workshop at SPARK! Dallas. Spark is a hands on and interactive creative center in the heart of Dallas. Join us for a tour and hands-on workshop.

2016 TAEA Conference Tours and Experience Institutes

FRIDAY, NOVEMBER 18

- **Meadows Museum**

Friday, 10:30 AM - 1:00 PM. Maximum 27 participants. Fee: \$20

Ticketed Event

Experience the Spanish Masters of the Meadows Museum at Southern Methodist University! This tour will feature works by Picasso, Dalí, and Miró in the special exhibition Modern Spanish Art from the Asociación Colección Arte Contemporáneo.

- **The Warehouse Tour: Text and Spoken Word in Contemporary Art**

Friday, 10:30 AM-1:00 PM. Maximum of participants 27. Fee: \$20

Ticketed Event

Join us for a tour, discussion, and hands-on experience at The Warehouse, a contemporary art space in Dallas created by two collecting families - the Rachofskys and the Faulconers. We will explore how artists Mark Bradford, Bruce Nauman, Judy Chicago, Christian Jankowski, and others use text to explore contemporary notions of identity.

- **Dragon Street Galleries and Dallas Design District Hop on/Hop off Shuttle**

Friday, 11:00 AM - 1:30 PM. Maximum of 100 participants. Fee: \$15

Ticketed Event

Explore the fabulous galleries on Dragon Street in the heart of the Dallas Design District. Make sure to visit Samuel Lynne, Laura Rathe Fine Art, The Lawley Art Group, Christopher H. Martin, Mary Tomas galleries, and more! Tour the galleries at your leisure. The shuttle service will run from the Anatole Hotel beginning at 11:00 am and the last shuttle leaving Dragon Street at 1:30 pm. The bus will make two stops on Dragon Street.

- **Cowboy Stadium Art Tour (ATT Stadium) and the Arlington Museum of Art for 3-D Picasso Exhibition and Reception**

Friday, 3:00 PM-9:00 PM. Maximum of 75 participants. Fee: \$50

Ticketed Event

Docent led tour of the Art collection at AT&T Stadium, home of the Dallas Cowboys. You don't have to be a football fan to enjoy this tour! View the Jones family's world class art collection with over 40 works including 14 large scale site specific installations. The tour continues to the Arlington Museum of Art for a tour of the 3-D Picasso exhibition and reception to meet and greet Janeil Engelstad and Cassie Stephens! Tour fee and bus transportation is included.

- **Evening in the Arts District**

Friday, 7:00 PM-11:00 PM. No maximum number of participants. Fee: \$15

Ticketed Event

It's Late Night in the Arts District! Experience the Dallas Museum of Art, Crow Collection of Asian Art, and the Nasher Sculpture Center at your leisure. The DMA does have an extra admission price of \$15 for their Late Night at the DMA activities. Optional: Bring money for dinner at one of the food trucks that are at Klyde Warren Park.

2016 TAEA Conference Tours and Experience Institutes

SATURDAY, NOVEMBER 19

- **Perot Museum of Nature and Science**

Saturday, Time 10:30 AM-12:30 PM. Maximum of 27 participants. Fee: \$20

Ticketed event

Come and check out what's happening at the Perot Museum of Nature and Science. Not only will you get a study in science, but it will most definitely spark your interest as you implement STEAM into your curriculum.

- **Dallas Museum of Art: Educational Interpretations**

Saturday, 10:30 AM-1:00 PM. Maximum of 27 participants. Fee: \$20

Ticketed Event

11:00am – noon – Docent-led tour of the special exhibition, Divine Felines that will conclude with a behind-the-scenes look at how we developed our interactives for the Educational Space within the exhibitions with Jessica Fuentes, Manager of Gallery Interpretation and C3.

Noon – 1:00pm – Participants will be led on a tour through the Center for Creative Connections with a special look at educational interactives and community engagement.

- **The Crow Collection of Asian Art - Conversation and Creation: Mexican Talavera Ceramics**

Saturday, 10:30 AM-1:00 PM. Maximum of participants 27. Fee: \$20

Ticketed Event

Join Gallery Educators from the Crow Collection of Asian Art for a Harvard Project Zero Artful Thinking discussion in the multi gallery exhibition, Clay Between Two Seas: From the Abbasid Court to Puebla de los Angeles. Following the engaging gallery experience, join the Education staff for an art making ceramic tile activity inspired by porcelain of China and blue and white tin glaze from the Islamic empires.

- **Dragon Street Galleries and Dallas Design District Hop on/Hop off Shuttle**

Saturday, 11:00 AM-1:30 PM. Maximum of 100 participants. Fee: \$15

Ticketed Event

Explore the fabulous galleries on Dragon Street in the heart of the Dallas Design District. Make sure to visit Samuel Lynne, Laura Rathe Fine Art, The Lawley Art Group, Christopher H. Martin, Mary Tomas galleries, and more! Tour the galleries at your leisure. The shuttle service will run from the Anatole Hotel beginning at 11:00 am and the last shuttle leaving Dragon Street at 1:30 pm. The bus will make two stops on Dragon Street.

- **Art Galleries and Midtown Gallery Walk**

Saturday, 6:00 PM-9:00 PM. Maximum of 50 participants. Fee: \$15

Ticketed Event

Staying Saturday night? The Midtown ARTwalk is a fine art and entertainment event that takes place the 3rd Saturday of each month at the Gallery at Midtown & Artist Studios located inside Valley View Center, Dallas, Texas. Midtown ARTwalk promotes local visual art and artists in a wide range of mediums and artistic style, including painting, sculpture, metal art, handmade jewelry, fiber art, photography, pottery, and glass works.

#K12ArtChallenge



MAKE ART

Challenge Runs
October 16 - November 20

www.TAEA.org





MASTER ART EDUCATOR SERIES

Children change and therefore as educators we must morph and adjust to meet their needs and ensure they learn, grow, and become successful. To that end, MAE Has a FACELIFT! Because there are always things to learn – ways to grow – TAEA offers the tools in its series on the MASTER ART EDUCATOR.

The Texas Art Education Association offers its MASTER ART EDUCATOR Strand, created to provide members successful tools. The profile includes 10 essential attributes or topics. When these are absorbed, adopted and implemented as needed – in part or in whole – they will enable art teachers to find real success in their classrooms and real joy in their profession. They can also serve as examples to other content area teachers because educators in the fine arts are blazing the trail of authentic learning for children. This is true integration.

- ★ Are you a brand new art educator?
- ★ Are you an art educator with alternative certification?
- ★ Are you an art educator looking for a specific solution?
- ★ Are you an art educator in search of all the tools you can find?
- ★ Are you in need of rejuvenation?

If you answered “yes” to any of the above, come to the Annual Conference and thoroughly explore the depths of the Master Art Educator with us. There are 10 amazing Master Art Educators who will be guiding these sessions.

The 10 Attributes or Topics (and sessions) are: 1. Fostering creative originality, 2. Assessing authentically, fairly, creatively, 3. Setting up room for success, 4. Relating to students key to success, 5. Making it real – relevance in the classroom, 6. Powerful lesson designs, 7. Special students and different learning styles, 8. Collaboration, 9. Expectations and engagement, and 10. The Lifelong learner.

So – come and explore this strand with us. It will lift you higher!

Jessica Jones Gonzales

1. MASTER ART EDUCATOR: *Fostering Creative Originality*

- TEKS main focus and tenets
- Students synthesize from original sources to meet competition standards
- Design work for students to work conceptually rather than through mimicry so they work at the highest level
- Artwork is original demonstrating student voice which is essential for college-readiness and an artistic future
- Encourage, cultivate, and celebrate thoughtful creative process and creative problem solving skills
- Concept-driven.
- Student-guided and student-centered.
- Student will independently demonstrate visual literacy by interpreting and creating artwork to communicate original ideas and concepts
- Students observe their environment to reflect and demonstrate how art is part of everyday life.
- Encourages students to approach concepts with a new perspective to stretch their artistic growth.
- Gives positive feedback, support, and continues student mastery.
- Promotes peer collaboration, critique, brainstorming and other strategies to foster independent learning
- Project designs to guide students toward becoming risk takers, problem solvers, and creative thinkers.

Sarah Pagona

2. MASTER ART EDUCATOR: Assessing Authentically, Fairly, Creatively

- Engages and learns technology (including apps & varied types of devices) from students and colleagues.
- Teaches students to be Digitally Literate
- Encourages creation of student digital portfolios
- Creating effective rubrics and encouraging students to create criteria and rubrics for self-evaluation
- Assessment varies from student to student and process to process; consider multiple methods
- Merge district and campus requirements into effective authentic assessment
- Competition as a form of art standardized assessment
- Parent communication concerning standards and assessment

Paul Kretchmer

3. MASTER ART EDUCATOR: Setting Up the Room for Success

- Physical layout of the room is optimal for ease of movement and the encouragement of collaboration and collegiality.
- Labeling of the room for student independence
- Students given choices within the creative environment.
- Offers the availability of different media/materials to expand their creative process.

Shaun Lane

4. MASTER ART EDUCATOR: Relating to Students Key to Success

- Demonstrate caring and love
- Take care with verbal tones
- Believe in the students and their success; be a coach and the art students are the team
- Builds relationships with students
- Collaborates with students to develop human commonalities
- Is a facilitator in the student-centered classroom rather than a dispenser of knowledge
- Relates to students through developing rapport
- Student success is developed through mutual respect
- Student interest in learning is supported and celebrated

- Art room/studio allows communication-agreeing to disagree, exploring, discovering, and creating.

Gretchen Bell

5. MASTER ART EDUCATOR: Making It Real – Relevance in the Classroom

- Use apps & other technology students are interested in
- Projects are relevant to the student
- Student choice is allowed and encouraged
- Student interest and activities are encouraged and supported by their teacher
- Students are provided exploration time
- Projects are student-directed, open-ended; which allows for exploration and discovery of vision
- Students are encouraged to self-discover resulting in divergent outcomes
- Students are encouraged to create artwork that connects to their lives and culture
- Gives fresh ideas to keep learning clear and fresh
- Stays current with students' interest
- Career and college-readiness skills

Sarah Waggoner

6. MASTER ART EDUCATOR: Powerful Lesson Designs

- Successful designs for all the TEKS media
- Successful designs incorporating museum and community TEKS expectations
- Artwork shows command of media, resulting in mastery of concepts

Jen Holsinger-Raybourn

7. MASTER ART EDUCATOR: Special Students & Different Learning Styles

- Participating in ARDS
- Following IEPs
- Accommodations for LEP and 504,
- Differentiation for learning styles
- Different teaching strategies are used: teacher demonstration, guest speakers, field trips, community resources such as museums, libraries, galleries, etc.
- Promotes cross curricular thinking and learning
- Encourages student participation through peer critique, team-building, and other student-centered strategies

Julie Smith

8. MASTER ART EDUCATOR: Collaboration

- Teacher to teacher – inside content area and in other content areas
- Campus team-player
- Leads other content areas with fine arts integration strategies
- Brainstorms strategies with colleagues to stretch imaginations and expands student creativity.
- Advocates for the art student and program.
- Promotes cross curricular connections through lessons/projects involving writing, math, science, reading, history, and research
- Students promote fine art spirit events such as Big Art Day
- Builds relationships with community

Cash Teague

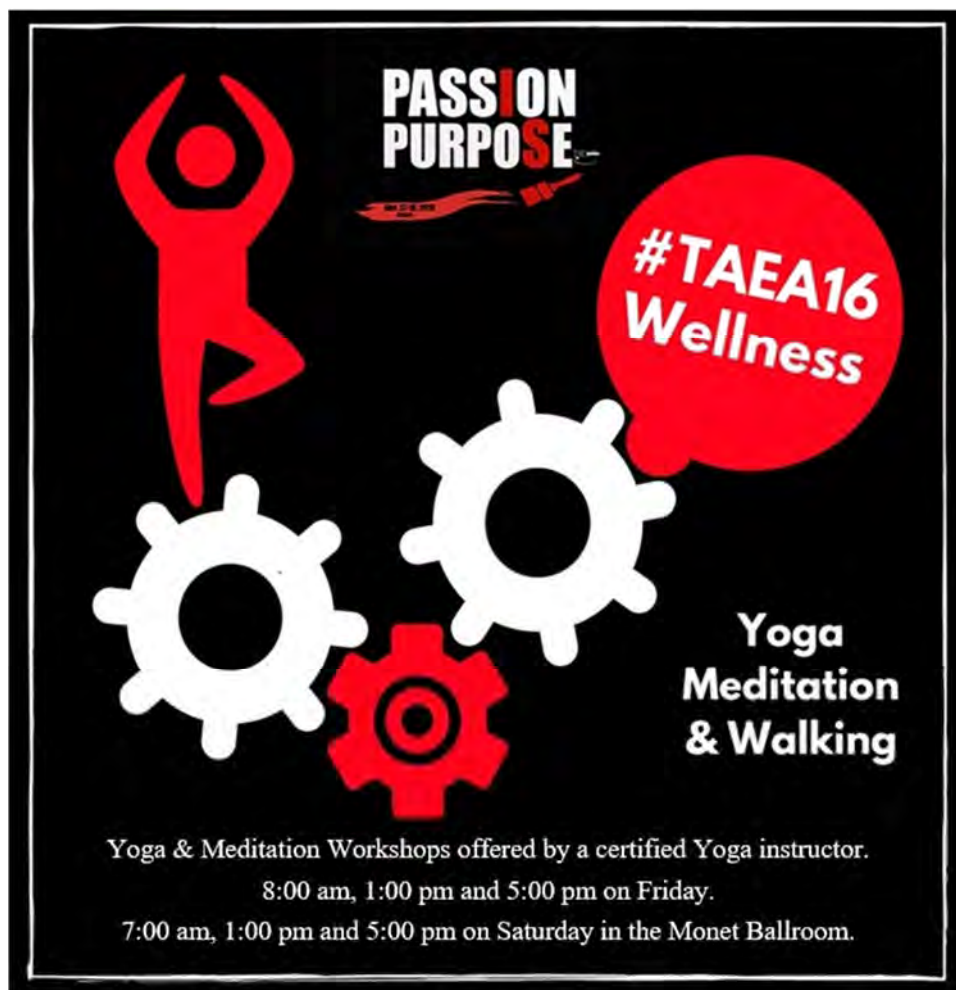
9. MASTER ART EDUCATOR: Expectations & Engagement

- Non-confrontational and effective discipline strategies
- Verbal communication for encouragement and inspiration
- Lesson designs that inspire full-time engagement for all

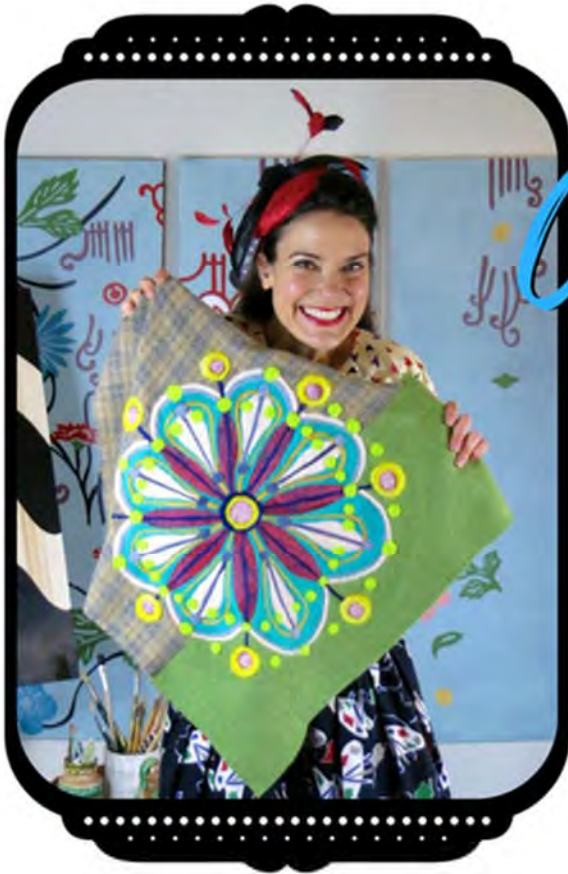
Lisa Miller

10. MASTER ART EDUCATOR: Lifelong Learner

- Promotes art as a multifaceted career; making them aware of career choices
- Continue to foster connections with community studios, local galleries, and contemporary artists
- Demonstrates the use of innovative materials and techniques to build student artistic experiences
- Promotes learning experience outside of the classroom day
- Is a practicing artist and inspires students by example
- Is an energized, passionate professional
- Seeks opportunities and participates in the personal creative process
- Seeks out and participates in problem-solving education
- Participates regularly in professional development opportunities and stays ahead of the educational learning curve
- Stays current in technology developed for art education
- Writes grants for funding needs



CASSIE STEPHENS K12 ART CHAT



Cassie Stephens

Hosts



11/10/16

#K12ArtChat

8:30 pm cst



AREA ART SHOW

Region 10 & 11

Use same Guidelines and Requirements as TAEA State YAM
Allowed to submit the same number of pieces as State
YAM according to your district's student population

Drop Off:

Wed Nov 16 Anatole Rotunda 7-9pm
Thurs Nov 17 Anatole Rotunda 7-9am

Pick Up:

Sat Nov 19 Anatole Rotunda 4:30-7pm

Labels will be provided for you at time of drop
off. Submit artwork info by **Oct 28th** so labels can
be printed using the Google form below:

<http://bit.ly/TAEA2016Artshow>



**HILTON ANATOLE
DALLAS, TX**

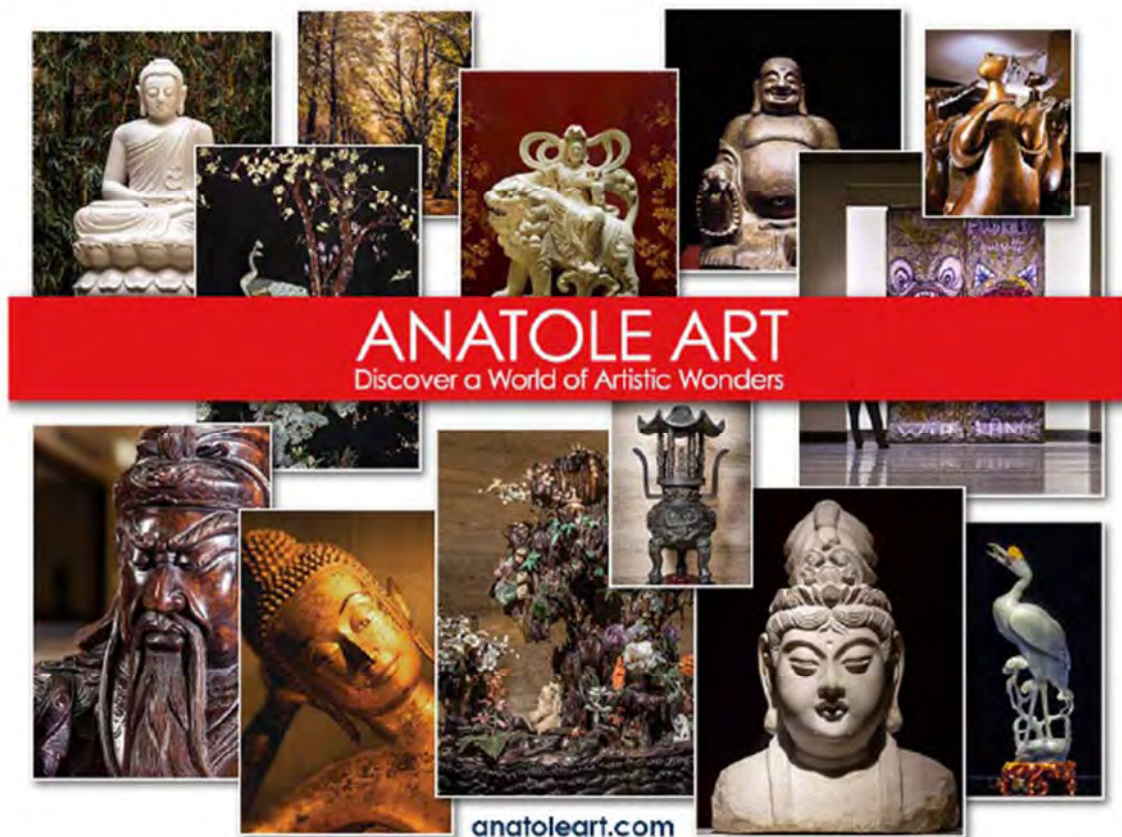
There is still time to be a Walk-Up Workshop Presenter



Do you want a chance to present at conference in November? Walk-Up Workshops are an easy, stress-free way to share your ideas, lessons, and tips during a quick, come-and-go walk-up presentation. It's a great opportunity to present, especially if you have never presented before!

Walk-Up Workshops are scheduled in hour increments throughout the whole conference, and we need YOU to present!

Click on <http://tinyurl.com/jahu8nx> to learn more and submit your idea TODAY!





TAEA Dale Battle Scholarship Application

Dale believed in TAEA and giving back all he could to students in order to grow them as learners and as artists. Established in 2011, the Dale Battle Memorial Conference Scholarship provides funds for first-year art educators to attend the TAEA Annual Conference in order to grow their teaching skills and connect them with the art education community - building on his legacy of giving back to impact students. Applications are being accepted for this scholarship, please download and submit an application by October 1.

<http://www.taea.org/TAEA/resources.asp?option=scholarship-dale-battle>



Purchase your **2016 TAEA**
Passion **is** Purpose
Conference T-Shirt TODAY!

Click on this link:

<https://www.booster.com/passionispurposetshirt>
to buy now!

Buy a **SHIRT** and GIVE Back....

All proceeds from the **2016 TAEA conference T-Shirt** will be donated for art projects and art advocacy to the Dallas Child's Advocacy Center.

The **T-Shirt is \$15 plus shipping and handling** and will be delivered directly to you. .



Workshop Schedule

Click on <http://www.taea.org/TAEA/conference.asp> and then click on the Workshop Schedule link for a full list of the tentative workshop schedule. Please note that updates to the schedule can occur up to the time of conference. Check on the TAEA Conference App when available for schedule updates during conference.

Conference Notes

- Be sure to attend your Division Meeting – scheduled for Saturday at 8:00 am.
- Be at the Jade entrance at least 15 minutes before the Experience Institute or Tour is scheduled.
- If you are not ticketed for a workshop, please allow those who are ticketed to go to the front of the classroom. You will be able to observe at ticketed workshops.
- Please ask vendors for their permission before taking supplies.
- Have fun and have a great conference!

DIRECTIONS TO THE HILTON ANATOLE

The Hilton Anatole hotel is located at 2201 North Stemmons Freeway (I-35E) on 45 lush acres just north of the downtown Dallas, Texas business district - three miles from the recently expanded Dallas Convention Center, 20 minutes from Dallas/Ft. Worth International Airport and 10 minutes from convenient Dallas Love Field Airport. The hotel property may be accessed from its bordering streets; I-35E, Market Center Blvd. and Wycliff Ave.

Take I-35E North to Market Center Blvd. Turn left onto Market Center Blvd. and you will see the hotel on the right.

For additional driving or hotel information, please call the Hilton Anatole at 214-748-1200.

HOW TO GET THE HOTEL FROM DALLAS AIRPORTS

Dallas/Fort Worth International Airport

DIRECTIONS

Take south airport exit (Hwy 183 East); merge with I-35E South. Go about 4 miles, then exit Market Center Blvd. Hotel is on the right hand side.

Distance from Hotel: 14 mi.

Drive Time: 20 min.

Type	Typical Minimum Charge
Limousine	\$110
Super Shuttle	\$19
Rental Car	Prices vary
Taxi	\$40

Dallas Love Field

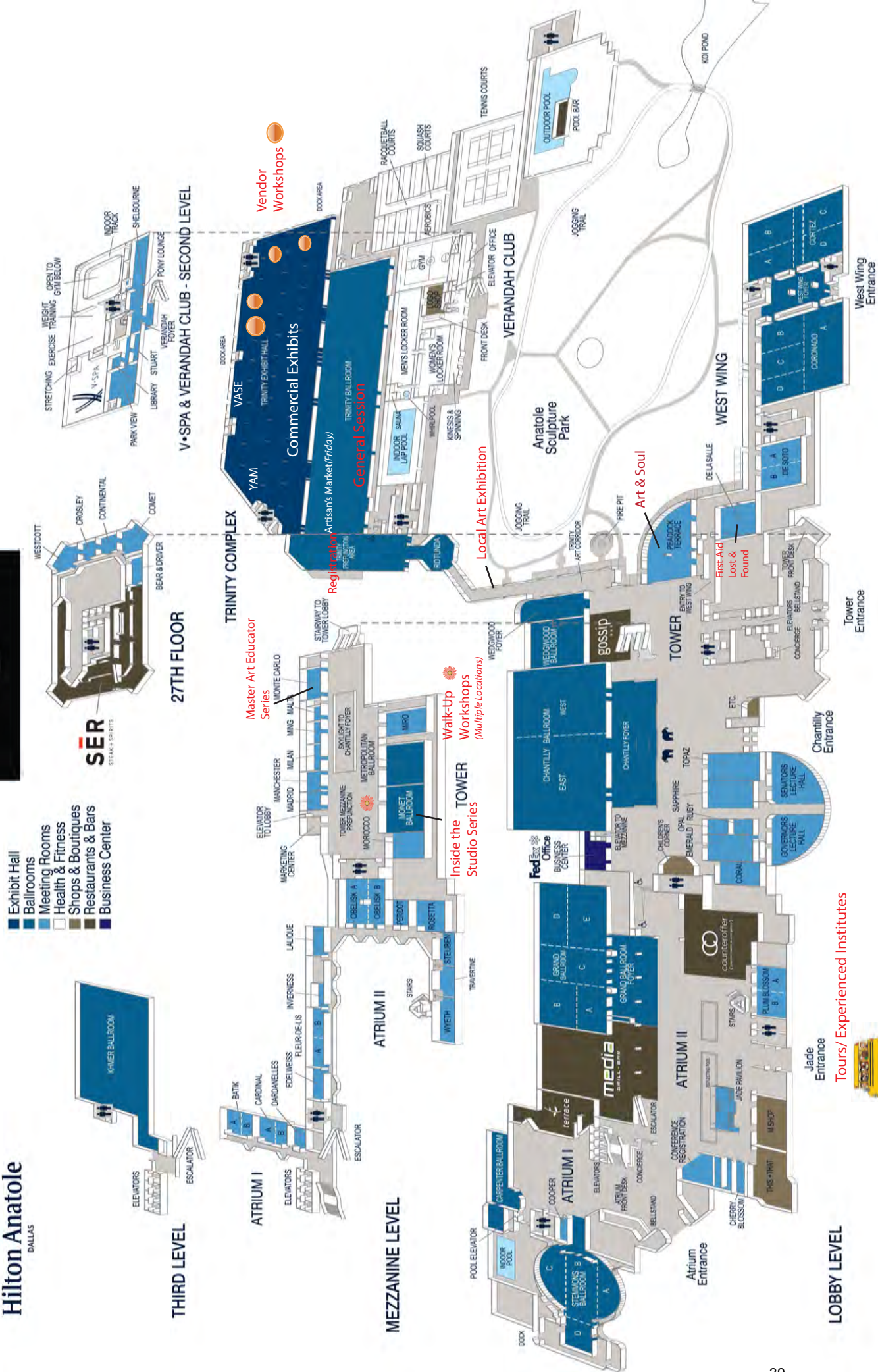
DIRECTIONS

Exit airport and turn right onto Mockingbird; make a left to get onto 35E South; exit Market Center Blvd. - hotel is on the right hand side.

Distance from Hotel: 6 mi.

Drive Time: 10 min.

Type	Typical Minimum Charge
Limousine	\$110
Super Shuttle	\$17
Taxi	\$20





Membership Application
Texas Art Education Association
14070 Proton Rd., Ste. 100, LB 9, Dallas, TX 75244
Phone: 972/233-9107 x212; Fax: 972/490-4219
Email: info@taea.org

Contact Information

Name			
Mailing Address			
Home Phone		Work Phone	
Cell Phone		Fax	
Email Address			

TAEA Membership Status (check one)

- ☐ I will be a new member. Please add my information to the TAEA database.
- ☐ I am a returning member. My TAEA number is: _____

School: _____ **District:** _____ **TAEA Region*:** _____
*(if known)

Professional Level (check one)

- | | | |
|--|---|---|
| <input type="checkbox"/> Elementary | <input type="checkbox"/> Private School | <input type="checkbox"/> Supervision/Administration |
| <input type="checkbox"/> Middle School/Junior High | <input type="checkbox"/> Higher Education | <input type="checkbox"/> Museum |
| <input type="checkbox"/> Senior High | | |
| <input type="checkbox"/> Student at _____, anticipating graduation in _____. | | |

Membership Level (check one)

- ☐ **Active \$55**
 For those engaged in the teaching of art or the direction of art programs, or in the pursuits closely related to the art education field.
- ☐ **Associate \$44**
 First Year Professional. For those just beginning their professional teaching career.
- ☐ **Retired \$20**
 For those who are retired from the art education profession.
- ☐ **Student \$20**
 For full-time students who are not yet employed as art educators.
- ☐ **Sustaining Membership \$44**
 For conference exhibitors and businesses not actively engaged in art education.

- ☐ **Institutional \$275**
 For institutions directly or indirectly involved in art education. Includes: ONE prepaid registration fee for the TAEA annual conference and three designated teachers' participation in VASE/Youth Art Month program – no substitutions can be made.
List names of the three participating teachers, including the one on this form. Attach separate forms for each.

Name	Check which one will attend conference
	<input type="checkbox"/>
	<input type="checkbox"/>
	<input type="checkbox"/>

Payment Information: ☐ credit card information provided below ☐ check

Card Type:	Number:	Expiration:	<input type="checkbox"/> Dues	\$
	Name as it appears on card:		<input type="checkbox"/> Memorial Scholarship Fund Donation*	\$
	Billing address:	3/4-digit CVV2 Code (back of card):	<input type="checkbox"/> Building Fund Donation*	\$
	Signature:		TOTAL PAYMENT	\$
<input type="checkbox"/> Visa <input type="checkbox"/> MC <input type="checkbox"/> AmEx <input type="checkbox"/> Discover			*Donors of \$50+ may specify a tribute. Check one: <input type="checkbox"/> "In honor of" <input type="checkbox"/> "In memory of" Honoree:	

2016 TAEA Conference Pre-Registration Form (08-15-16)

November 17-19, 2016

Dallas, Texas

Pre-Registration Information **Note: It's easy to register online at taea.org**

Name _____

Street Address _____

City/State _____ Zip _____ Telephone (____) _____

Email address _____ TAEA Number (if known) _____

ISD or Institution Name & City _____



Please list any special requirements you have in order to participate in this program.

Pre-Registration Fees

Pre-registration fee includes all workshops, general sessions, and exhibits. It does not include limited space/materials sessions, supervisors meeting, experience institutes and tours.

Early Registration fees end Midnight, October 17th, 2016.
Late Registration fees end Midnight, October 31st. After
Midnight, October 31st, On-site Registration Fees will apply.

CIRCLE the appropriate pre-registration fee.

	Early Regis.	After 10/17	On-site Regis. After 10/31
--	-------------------------	------------------------	---

FOR CURRENT MEMBERS

Active Member	\$130	\$145	\$170
Associate Member	\$130	\$145	\$170
Retired Member	\$124	\$139	\$139
Full-time College/Univ. Student	See notes under <u>Student Registration</u> , below		
Institutional Member	--No Charge--		
TAEA Fellow	\$70	\$70	\$70
★ Saturday Sessions Only	\$99	\$99	\$99 NEW!

LAPSED MEMBERS/NEW MEMBERS (includes membership)

Active member – Full session	\$185	\$200	\$225
Active member- Sat. Only	\$154	\$154	\$154
Associate Member - Full session	\$174	\$189	\$214
Assoc. Member- Sat. Only	\$143	\$143	\$143
College/Univ. Student	See notes under <u>Student Registration</u> , below		
Retired Member	\$144	\$159	\$159
Retired Member-Sat. Only	\$119	\$119	\$119
Institutional Member	\$275	\$275	\$275
Guest *	\$130	\$145	\$170
Guest- Sat. Only	\$99	\$99	\$99

*non-art education spouse/friend

Division (CIRCLE):

Elementary	Junior/Middle School
High School	Supervision/Administration
College Student	Museum
Institution	Retired
Higher Education	Sustaining
Private School	Other _____

Student Registration

Texas Art Education Association (TAEA) is pleased to waive our 2016 annual conference registration fee to all pre-service art education students currently enrolled in a preparation program with a valid TAEA student membership. Experience Institutes, Tours and Special Events that require a fee are excluded from this offer. **Pre-Service Students are required to attend the Student Division meeting on Saturday**

To register, pre-service art education students must complete a registration form and attach a copy of their current, valid college or university ID and submit both items to TAEA Headquarters prior to October 31st to:

Texas Art Education Association
14070 Proton Road, Suite 100
Dallas, TX 75244

New student members must include a payment of \$20 for membership.

Registration Policies

Only individuals registered for and wearing badges may attend conference programs and visit the Exhibit Hall. A spouse/friend of a registrant need not register unless they wish to participate in TAEA events or enter the Exhibit Hall.

Early registration must be postmarked or received at TAEA Headquarters no later than midnight, October 16th to receive the early discount.

Registrations received between October 17th and midnight, October 31st will be charged full registration fees.

Forms received after midnight, October 31st will be considered on-site registrations and applicable fees will apply.

REFUNDS

A \$25.00 processing fee will be charged to all cancellations received on or before midnight, October 31, 2016.

No refunds will be issued after midnight, October 31, 2016 due to conference administrative costs

Pre-Registration for Limited Space/Materials Sessions, Experience Institutes and Tours

Limited Space/Materials Sessions, Experience Institutes and Tours require pre-registration. Limited space/materials sessions are at no cost but **REQUIRE** pre-registration to attend. Pre-registration and pre-payment for experience institutes and tours

is required. If you do not pre-register for limited space/materials sessions, experience institutes and tours you may register on-site if space is available.

For a complete listing of all educational opportunities, see workshops publicized under conference information on the TAEA website, taea.org.

CIRCLE the event(s) you wish to attend, then add the fees (if applicable) to your basic pre-registration amount. There is no admittance to conference workshops, limited space/materials sessions, experience institutes or tours after they begin, after maximum attendance is reached, or for observations.

Please Note:

Limited Space sessions are restricted to a total of 2 sessions during early registration. You can select up to 4 and number 1 through 4, based on your interest. If you select more than 2, the first 2 available will be given to you.

For example:

This is a Ticketed Session
1:00 PM -2:45 PM
Maximum of 50 Participants

2

Ticketed Event

Priority 1 through 4

Some sessions may already be full when you register.
You can check availability by going to:

<http://www.taea.org/TAEA/conference-workshops.asp>

NOTE: The receipt included in your on-site registration will be required for entrance into all limited space/materials sessions, experience institutes and tours.

Thursday – November 17, 2016

SUPERVISOR'S MEETING

(CIRCLE event to pre-register)

4:00 pm-9:00 pm, Metropolitan - \$75.00

Thursday Limited Space/Materials

(CIRCLE and number event to pre-register)

Sgraffito and Wax on Clay: Rich Surface Design

4:00 PM -5:45 PM

Maximum of 50 Participants

☐

Ticketed Event

Textile Art & Design Manipulation with Tyvek

5:00 PM -5:45 PM

Maximum of 25 Participants

☐

Ticketed Event

Introduction to Slab Building

5:00 PM -6:45 PM

Maximum of 25 Participants

☐

Ticketed Event

Painting Paths of VR Panorama...and Beyond

5:00 PM -6:45 PM

Maximum of 20 Participants

☐

Ticketed Event

Thursday Limited Space/Materials (cont'd)

(CIRCLE and number event to pre-register)

Online and Offsite: Authentic Museum Experiences

5:30 PM -8:15 PM

Maximum of 50 Participants

☐

Ticketed Event

Creating Color with Ink Tense Pencils

6:00 PM -6:45 PM

Maximum of 50 Participants

☐

Ticketed Event

Magazines Fold into Art

6:00 PM -6:45 PM

Maximum of 25 Participants

☐

Ticketed Event

Thursday Tours/Experience Institutes

(CIRCLE event to pre-register)

Evening in the Arts District

5:30 PM - 9:00 PM

Maximum of 100 participants.

Fee: \$15

Friday – November 18, 2016

Friday Limited Space/Materials

(CIRCLE and number event to pre-register)

Frank Lloyd Wright - Inspired Stained Glass

9:00 AM -9:45 AM

Maximum of 50 Participants

☐

Ticketed Event

The Walking Classroom: Audio Walks and Engagement

9:00 AM -9:45 AM

Maximum of 25 Participants

☐

Ticketed Event

Lights, Camera, Action!

9:00 AM -10:45 AM

Maximum of 30 Participants

☐

Ticketed Event

The Super Pour - Pouring Acrylics by Salli Babbitt

9:00 AM -10:45 AM

Maximum of 30 Participants

☐

Ticketed Event

Pastel Color with Georgia O'Keefe

9:00 AM -10:45 AM

Maximum of 25 Participants

☐

Ticketed Event

Polymer Clay Beadmaking, with Macramé

9:00 AM -11:45 AM

Maximum of 25 Participants

☐

Ticketed Event

Making Transparency Concrete

11:00 AM -11:45 AM

Maximum of 35 Participants

☐

Ticketed Event

Making Your Mark with Gelli Plates

11:00 AM -11:45 AM

Maximum of 20 Participants

☐

Ticketed Event

Mixed Media Acrylics with Salli Babbitt

11:00 AM -12:45 PM

Maximum of 30 Participants

☐

Ticketed Event

Whistling In Big D

11:00 AM -12:45 PM

Maximum of 25 Participants

☐

Ticketed Event

Easy Photoshop Ideas for Photography

11:00 AM -12:45 PM

Maximum of 25 Participants

☐

Ticketed Event

Painting With Dry Color - Pan Pastel Techniques

11:00 AM -12:45 PM

Maximum of 20 Participants

☐

Ticketed Event

Friday Limited Space/Materials (cont'd)

(CIRCLE and number event to pre-register)

Looking Through the Pouring Glass-Mix Media

11:00 AM -1:45 PM

Maximum of 20 Participants

☐

Ticketed Event

Drawing with DVI

11:00 AM -1:45 PM

Maximum of 20 Participants

☐

Ticketed Event

Inkjet Photo Manipulation: Distorting the Truth

12:00 PM -12:45 PM

Maximum of 50 Participants

☐

Ticketed Event

Middle School Masters: Create and Destroy!

12:00 PM -1:45 PM

Maximum of 35 Participants

☐

Ticketed Event

Creating A Rich, Multimediu Drawing

12:00 PM -1:45 PM

Maximum of 35 Participants

☐

Ticketed Event

Plastic Pollution Transforms into ART!

1:00 PM -1:45 PM

Maximum of 50 Participants

☐

Ticketed Event

Intuitive Composition

1:00 PM -1:45 PM

Maximum of 35 Participants

☐

Ticketed Event

The Wonderful World of Clay! 3-D Art in the Classroom

1:00 PM -1:45 PM

Maximum of 25 Participants

☐

Ticketed Event

Glass Fusion Magic

5:00 PM -6:45 PM

Maximum of 50 Participants

☐

Ticketed Event

Tiffany Method

5:00 PM -6:45 PM

Maximum of 35 Participants

☐

Ticketed Event

Visualizing Sound

5:00 PM -6:45 PM

Maximum of 30 Participants

☐

Ticketed Event

Whoo Wants Some Owsome Fun

5:00 PM -6:45 PM

Maximum of 25 Participants

☐

Ticketed Event

Symposium: Art & Technology - Purposeful Passion

5:00 PM -6:45 PM

Maximum of 25 Participants

☐

Ticketed Event

Spiral Bookmaking Cover Design

5:00 PM -6:45 PM

Maximum of 20 Participants

☐

Ticketed Event

Friday Tours/Experience Institutes

(CIRCLE and number event to pre-register)

Nasher Sculpture Center: Guided Tour of Kathryn Andrews: Run for President Exhibit

9:00 AM - 11:30 AM

Maximum of 15 participants.

Fee: \$20

The Crow Collection of Asian Art

9:00 AM - 11:30 AM

Maximum of 30 participants.

Fee: \$20

SPARK! Dallas: Adventures in Creativity

9:30 AM - 12:00 PM

Maximum of 27 participants.

Fee: \$20

Dallas Museum of Art - STEAM AHEAD!

9:30 AM - 12:00 PM

Maximum of 28 participants.

Fee: \$20

Friday Tours/Experience Institutes (cont'd)

(CIRCLE and number event to pre-register)

Meadows Museum

10:30 AM - 1:00 PM

Maximum 27 participants.

Fee: \$20

The Warehouse Tour: Text and Spoken Word in Contemporary Art

10:30 AM -1:00 PM

Maximum of 27participants

Fee: \$20

Dragon Street Galleries and Dallas Design District Hop on/ Hop off Shuttle

11:00 AM - 1:30 PM

Maximum of 100 participants.

Fee: \$15

Cowboy Stadium Art Tour (ATT Stadium) and the Arlington Museum of Art for 3-D Picasso Exhibition and Reception

3:00 PM - 9:00 PM

Maximum of 75 participants.

Fee: \$50

Evening in the Arts District

7:00 PM- 11:00 PM

No maximum number of participants.

Fee: \$15

Saturday – November 19, 2016

Saturday Limited Space/Materials

(CIRCLE and number event to pre-register)

Wrapped Baskets

9:00 AM -9:45 AM

Maximum of 25 Participants

☐

Ticketed Event

Contemporary Stitching

9:00 AM -10:45 AM

Maximum of 50 Participants

☐

Ticketed Event

Surface Decoration Using Silkscreens and Stencils

9:00 AM -10:45 AM

Maximum of 48 Participants

☐

Ticketed Event

Let's Be Creative

9:00 AM -10:45 AM

Maximum of 30 Participants

☐

Ticketed Event

WANTED!: Forensic Artists

9:00 AM -10:45 AM

Maximum of 30 Participants

☐

Ticketed Event

Op Art Mobiles

9:00 AM -10:45 AM

Maximum of 30 Participants

☐

Ticketed Event

A String of Fish Lessons

9:00 AM -10:45 AM

Maximum of 30 Participants

☐

Ticketed Event

Origami Integration

9:00 AM -10:45 AM

Maximum of 30 Participants

☐

Ticketed Event

Mini Art is a Big Deal

9:00 AM -10:45 AM

Maximum of 25 Participants

☐

Ticketed Event

Kitchen Casting

9:00 AM -11:45 AM

Maximum of 35 Participants

☐

Ticketed Event

DIY Light Painting

10:00 AM -10:45 AM

Maximum of 25 Participants

☐

Ticketed Event

Unconventional Non Traditional Still Life Projects

10:00 AM -11:45 AM

Maximum of 30 Participants

☐

Ticketed Event

Saturday Limited Space/Materials (cont'd)

(CIRCLE and number event to pre-register)

Painting With Dry Color

10:00 AM -11:45 AM

Maximum of 20 Participants

☐

Ticketed Event

See, Hear, Move, Create! With American Art

11:00 AM -12:45 PM

Maximum of 50 Participants

☐

Ticketed Event

Sneaker Culture

11:00 AM -12:45 PM

Maximum of 30 Participants

☐

Ticketed Event

Ignite your Passion Using Wax, Crayon & Ink

11:00 AM -12:45 PM

Maximum of 25 Participants

☐

Ticketed Event

Advertising the Artroom

12:00 PM -12:45 PM

Maximum of 50 Participants

☐

Ticketed Event

Penelope Paper Strip, Paper Bags, and Puppetry

12:00 PM -1:45 PM

Maximum of 50 Participants

☐

Ticketed Event

Indigenous Sculptures

12:00 PM -1:45 PM

Maximum of 50 Participants

☐

Ticketed Event

POW! Pop Self Portraits for Elementary Artists

12:00 PM -1:45 PM

Maximum of 30 Participants

☐

Ticketed Event

Etching Mirrors in the Classroom

12:00 PM -1:45 PM

Maximum of 25 Participants

☐

Ticketed Event

Assessment in the Art Classroom

4:00 PM -5:45 PM

Maximum of 50 Participants

☐

Ticketed Event

Chinese Sumi Brush Painting

4:00 PM -5:45 PM

Maximum of 50 Participants

☐

Ticketed Event

Full STEAM Ahead: Taking the A-Train through STEM

5:00 PM -6:45 PM

Maximum of 30 Participants

☐

Ticketed Event

Fun with Fiber

5:00 PM -6:45 PM

Maximum of 25 Participants

☐

Ticketed Event

Saturday Tours/Experience Institutes

(CIRCLE event to pre-register)

Perot Museum of Nature and Science

10:30 AM- 12:30 PM

Maximum 27 participants

Fee: \$20

Dallas Museum of Art: Educational Interpretations

10:30 AM - 1:00 PM

Maximum of 27 participants.

Fee: \$20

The Crow Collection of Asian Art - Conversation and Creation: Mexican Talavera Ceramics

10:30 AM – 1:00 PM

Maximum of 27 participants

Fee: \$20

Dragon Street Galleries and Dallas Design District Hop on/ Hop off Shuttle

11:00 AM - 1:30 PM

Maximum of 100 participants.

Fee: \$15

Art Galleries and Midtown Gallery Walk

6:00 PM – 9:00 PM

Maximum of 50 participants.

Fee: \$15



Payment Information:

- PURCHASE ORDERS will be accepted with an added processing fee per order of \$25.00. **PURCHASE ORDER MUST ACCOMPANY CONFERENCE REGISTRATION FORM.**
- No telephone registrations will be accepted.
- Please retain a copy of these completed forms for your records.
- Pre-registration can be faxed with credit card payment to 972-490-4219. If faxing, do NOT mail a copy of this form. Pre-registration can also be done online at taea.org.

Payment:

Supervisors Meeting: \$ _____
Registration Fee: \$ _____
Tours/Experience Institutes: \$ _____
Purchase Order Processing Fee: \$ _____
(\$25.00) **PO must accompany registration form.**
TOTAL \$ _____

CIRCLE Method of Payment:

Check MC/VISA AMEX PURCHASE ORDER

(Purchase Order and \$25.00 Processing Fee must accompany registration form.)

Credit Card Payment Information:

Print name as it appears on card: _____

Signature: _____

Card #: _____

Exp. Date: _____ Card Security Code: _____

Billing Address: _____

Mail completed pre-registration form and payment to:
TAEA Headquarters
14070 Proton Road, Suite 100
Dallas, TX 75244

**Fax Pre-registration form (with credit card payment) to:
972-490-4219**



Executive Board

President

Suzanne Greene
8738 Fairbend
Houston, TX 77055
713-467-9603
713-702-1135 Cell
gooder71@gmail.com

President – Elect

Mel Basham
89 Pinemont Dr
Pointblank, TX 77364
936-377-5156
713-299-3519 Cell
melbasham@
sbcglobal.net

VP Membership

Samantha Melvin
4801 Park Rd. 4 South
Burnet, TX 78611
512-277-0510 Cell
samantha.melvin@
taea.org

VP Elect Membership

Chris Cooper
103 Oak Ridge
San Marcos, TX 78666
512-393-6842
512-757-4070 Cell
chris.cooper@smcisd.net

VP Youth Art Month

Jen Holsinger-Raybourn
8001 Osborne Dr
Austin, TX 78729
918-809-7833
jen_raybourn@
roundrockisd.org

VP Elect Youth Art Month

Gretchen Bell
5801 Lumberdale Rd.
#142
Houston, TX 77092
979-299-9275 Cell
Gretchen.Bell@cfisd.net

Secretary

Kelley Quinn McGee
9553 Chuparosa Dr.
Fort Worth, TX 76177
817-845-3747
kmcgee@dentonisd.org

Treasurer

Jami Bevans
PMB 406, 3515 B
Longmire
College Station, TX
77840
979-777-5870 Cell
jbevans@csisd.org

Executive Director

Sara Chapman
1106 Wildflower Ct
Katy, TX 77494
281-923-8886 Cell
Schapman04@
comcast.net

Commercial

Exhibits Director

Ricia Kerber
914 Delsandri
Kemah, TX 77565
281-957-9138
281-648-7662 Cell
rkerber59@
comcast.net

VASE Director

Linda Fleetwood
8323 Border Knoll Dr.
San Antonio, TX
78240
210-407-0356
210-381-6000 Cell
linda.fleetwood@
taea.org

Elementary

Tracy Evans
1901 Eden Valley Lane
Plano, TX 75093
972-398-7974
214-336-4304 Cell
tracy.evans@pisd.edu

Elementary-Elect

Amanda Batson
10878 Mandalay Dr
Dallas, TX 75228
214-415-4718 Cell
amanda.batson@risc.
org

Middle School / Jr High

Christine Grafe
3271 SH 75 North
Huntsville, TX 77320
979-777-8437 Cell
cgrafe@csisd.org

Middle School / Jr High-Elect

Joelle Dulaney
119 April Waters W
Montgomery, TX 77356
214-458-0549
214-458-0549 Cell
jdulaney@richardsisd.
net

High School

Michelle Mosher
4108 Kings Canyon Dr.
Taylor, TX 76574
325-792-7419 Cell
artteacher008@yahoo.
com

High School-Elect

Sarah Waggoner
301 W. Warrior Trail
Grand Prairie, TX 75052
214-616-6135 Cell
sarah.waggoner@gpisd.
org

Higher Ed

Sherry Snowden
603 Canyon Wren Drive
Buda, TX 78610
512-560-2508 Cell
Snowdens20@hotmail.
com

Higher Ed-Elect

Heidi Powell
PO Box 684792
Austin, TX 78768
512-471-1488
hcpowell@utexas.edu

Museum

Jennifer Restauri
712 Green Avenue
Orange, TX 77630
409-886-2787
jrestauri@starkmuseum.
org

Museum-Elect

Emily Cayton
906 W 31st Street
Austin, TX 78705
757-615-0528
caytone@gmail.com

Supv./Admin.

Dr. Sharon Chumley
5315 Hollyhock Road
San Antonio, TX 78240
210-887-8243
charlsey.chumley@nisd.
net

Supv./Admin-Elect

Michaelann Kelley
14909 Aldine Westfield
Rd
Houston, TX 77032
713-880-3791
713-419-2351 Cell
mkelley@aldineisd.org

Student

Shelby Johnson
2901 Stadium Dr.
Forth Worth, TX 76129
404-661-7282
s.c.johnson@tcu.edu

