

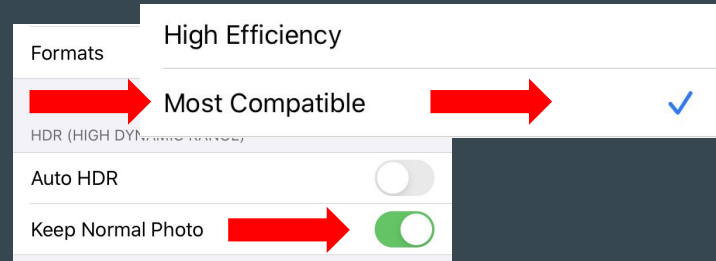
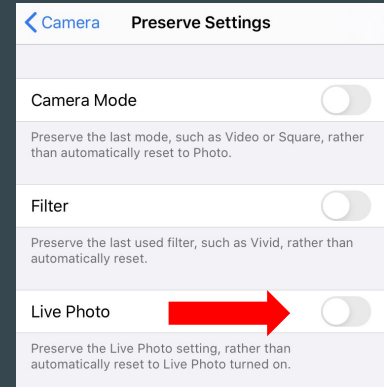
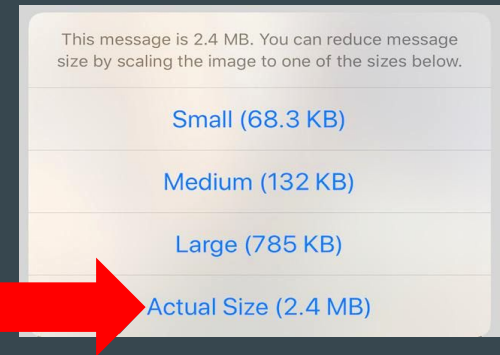
# Camera and Settings: VERY IMPORTANT!!!

- **Best camera to use:** A DSLR camera will allow you to control the lighting and white balance while generating high quality/resolution photos.
- **Next best camera:** Digital point & shoot camera with a zoom lens.
- With either a DSLR or a point & shoot, the highest JPEG setting is best. Converting RAW images may slow you down when downloading images from your memory card, and images may be too large (over 10MB).



# Camera and Settings: VERY IMPORTANT!!!

- A good-quality phone camera can be **used**, but you **MUST** check your phone settings before starting. **Do NOT have it set to HDR or Live**, and when you save or send images, you must choose **“actual size”** if you are given choices to avoid further quality reduction.
- On iPhones, in camera settings, choose **“Most Compatible”, NOT High Efficiency. High Efficiency (HEIF/HEVC format)** will produce images at a very low resolution, and not usable for VASE.



# Taking your photos: Setup

## PLACE ARTWORK ON A FLAT, LEVEL SURFACE TO TAKE PHOTOS



2D artwork is easy to photograph on the floor from above.

You can place the artwork on an easel, with a backdrop behind (foam core, matboard, etc.).



Be careful to prevent glare or shadows from obscuring the artwork, especially when photographing a glossy surface.



You **MUST** use a neutral background behind 2D images, and will crop it out at the end.

3D art **MUST** have a neutral background both **UNDER** and **BEHIND** it. Have both light & dark drapes available.

# Taking your photos: Setup

## SIMPLE 3D BACKGROUND EXAMPLES



**Make sure your background has a “SWEEP”**

# Photo Tips: *This photo must represent the artwork at its BEST!!!*

***Take photos from as close as you can get and still capture the whole artwork!***

- Leave no more than 1–2” around your artwork to maximize resolution.
- Check the viewfinder to see how much room is around the art. With a DSLR or point & shoot, you can use the zoom feature, but NOT with a phone camera.
- Be sure to focus clearly (you may be able to press lightly on the shutter button to focus).



***Do not use the zoom feature on a phone camera!***

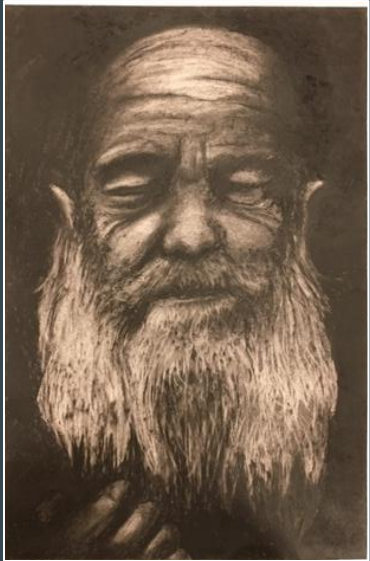
- Zoom on a phone will take away pixels, reducing quality.
- Fill the viewfinder with the artwork as much as possible.



# Photo Tips: *This photo must represent the artwork at its BEST!!!*

*Position your camera horizontally or vertically to match the artwork.*

If you are shooting horizontal pieces, keep the camera in the horizontal position.  
If shooting vertical artwork, adjust the camera so that it is in the vertical position.





# Photo Tips: *This photo must represent the artwork at its BEST!!!*

Avoid **KEYSTONING** as much as possible!

Shoot from directly above or in front of the image.

Square the image in your viewfinder.

Cropping or using photo-editing software can fix slight issues.

Newer phones have a setting to fix keystone in EDITING mode.

